

# T estpassport問題集



---

更に上のクオリティ      更に上のサービス

一年で無料進級することに提供する  
[Http://www.testpassport.jp](http://www.testpassport.jp)

**Exam** : **050-690**

**Title** : novell network  
management;netware 6.5

**Version** : DEMO

**1.In which container is the organizational CA object found in your eDirectory tree?**

- A.KAP
- B.NMAS
- C.[ROOT]
- D.Security
- E.The same container where the server has been installed.

**Correct:D**

**2.You're configuring an SLP Directory Agent on your NetWare 6.5 server. You want to statically configure your server to communicate with another Directory Agent whose IP address is 10.0.0.4. This server resides on a different network segment than your server. Which of the following is the correct command to enter in the SLP.CFG file to accomplish this?**

- A.DA=10.0.0.4
- B.SLPDA=10.0.0.4
- C.DA IPV4 10.0.0.4
- D.DA IPV4, 10.0.0.4
- E.SLPDA IPV4 10.0.0.4
- F.SLPDA IPV4, 10.0.0.4

**Correct:D**

**3.Deployment Manager fails when run from the NetWare 6.5 Operating System CD on your Windows 2000 Professional workstation with Novell Client 4.83 installed. What is the cause?**

- A.Deployment Manager requires Windows XP Home edition.
- B.Deployment Manager is not compatible with Novell Client 4.83.
- C.You must upgrade to Internet Explorer 6.0 or later on the workstation.
- D.Deployment Manager is not compatible with Windows 2000 Professional.
- E.Deployment Manager must be installed on the workstation before running the program.
- F.The version of Deployment Manager on the Operating System CD only runs on Windows 95/98 workstations.

**Correct:B**

**4.What is another name for the server certificate?**

- A.WEP key
- B.Key material object
- C.Certificate authority
- D.Certificate signing request

**Correct:B**

**5.Which statements are true regarding subordinate reference replicas? (Choose 2)**

- A.There can be multiple subordinate references per partition.
- B.Subordinate references must reside on every server in the tree.
- C.Subordinate references link a parent partition with its child partition.
- D.Subordinate references can be changed to be a master replica without losing any information.
- E.Subordinate references should be removed to help reduce traffic across the communication channel.

**Correct:A C**

**6.Which command will enable Transition Tracking System (TTS) on an NSS volume named DATA?**

- A.TTS
- B.NSS /TTS=DATA

- C.TTS VOLUME=DATA
- D.NSS /TRANSACTION=DATA
- E.NSS /TRANSACTIONTRACKING=DATA

**Correct:D**

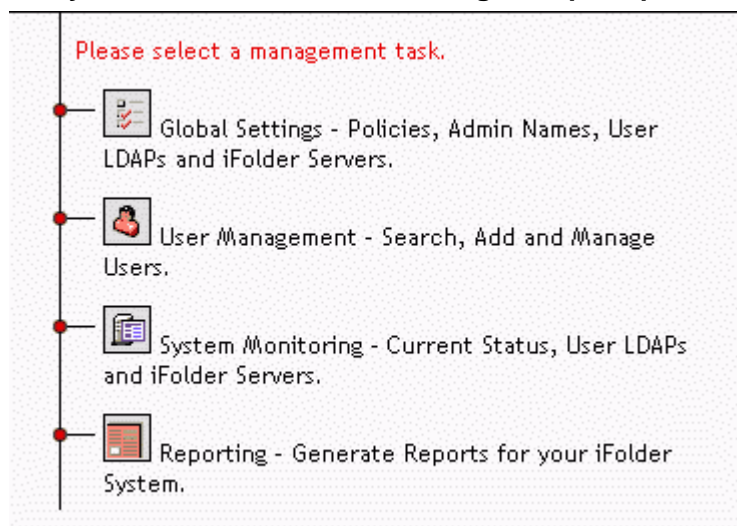
**7.You just deleted the DATA volume from your NetWare 6.5 server. You realize that this was a mistake and you need to restore it. By default, how long do you have before the volume is automatically purged?**

- A.12 hours
- B.36 hours
- C.48 hours
- D.72 hours
- E.96 hours

F.It's too late, the volume has been purged. You must recreate it and restore data from a back up device.

**Correct:E**

**8.Click the Point and Click button to begin. Click the Server Management Console management task you would use to recover a forgotten pass phrase.**



**Correct:**

**9.Your organization is implementing an e-commerce web site where external customers can shop for and purchase products. It's imperative that you establish a secure web site to do this. Which type of certificate authority should you use?**

- A.Public Certificate Authority
- B.Internal Certificate Authority
- C.External Certificate Authority
- D.Integrated Certificate Authority

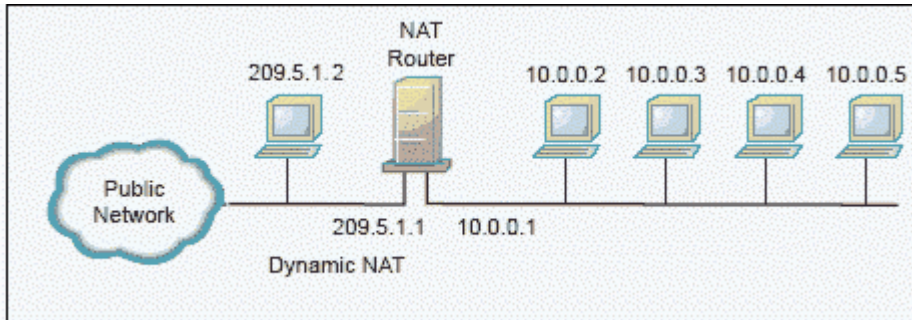
**Correct:C**

**10.In a time provider group, which server carries the most weight when voting on a time?**

- A.Master
- B.Primary
- C.Reference
- D.Secondary
- E.Single reference

**Correct:C**

11. Click the Exhibit button. You've configured your NetWare 6.5 server to function as a Dynamic NAT router between two network segments, as shown in the exhibit. The workstations on the private segment are running Windows 2000. The workstations on the public segment are running Windows XP. A user on the public segment whose IP address is 209.5.1.2 wants to access a shared folder on a workstation installed on the private segment whose IP address is 10.0.0.2. Will the user be able to accomplish this?



- A.No, Dynamic NAT doesn't support Windows shared folders.
- B.No, Dynamic NAT isn't supported by Windows 2000 systems.
- C.No, you must issue the SET ALLOW DYNAMIC PASSTHRU=ON command on the server first.
- D.Yes, Dynamic NAT routing allows bi-directional shared folder access between segments.
- E.No, Dynamic NAT doesn't allow hosts on the public segment to access hosts on the private segment.

**Correct:E**

12. You are upgrading a NetWare 6.0 server to NetWare 6.5. What command should you use to mount the NetWare 6.5 Operating System CD as a volume on your NetWare 6.0 server?

- A.CD MOUNT ALL
- B.LOAD NTFS.NLM
- C.LOAD NTFS.NSS
- D.LOAD CDROM.NSS
- E.LOAD CD9660.NSS
- F.LOAD CD9660.NLM
- G.LOAD ISO9660.NSS
- H.LOAD ISO9660.NLM
- I.MOUNT -T ISO9660

**Correct:E**

13. You are a regional network administrator remotely upgrading a NetWare 5.1 server to NetWare 6.5. The NetWare 5.1 server has 512 MB of RAM, a 180 GB RAID 5 disk array with a 1 GB DOS partition, and Support Pack 6 installed. Your user object has the Supervisor right to the container where the server resides and the Browse right to the root of the tree. Will the upgrade be successful?

- A.No, the DOS partition is too small.
- B.No, the server doesn't have enough RAM.
- C.Yes, the system meets all prerequisite requirements.
- D.No, you must have the Supervisor right to the root of the tree.
- E.No, you must first install Support Pack 7 on the NetWare 5.1 server.
- F.No, you can't remotely upgrade a server that uses a RAID disk array.

G.No, you can't perform a Remote Upgrade on a NetWare 5.1 server. You must use an In-Place Upgrade.

**Correct:D**

**14.In Public Key Cryptography, the \_\_\_\_\_ key is used to decrypt an encrypted transmission. Answer:**

A.PRIVATE

**Correct:A**

**15.Which parameter allows you to set the location in your eDirectory tree where user accounts exist, allowing older versions of the Novell Client that aren't directory-aware to authenticate to the server?**

A.User Context

B.Primary Server

C.Bindery Context

D.Preferred Server

E.Emulation Context

F.Compatibility Mode Driver

G.NetWare 3 Emulation Mode

**Correct:C**

**16.Which time server type adjusts its clock 50% per polling interval?**

A.Master

B.Primary

C.Secondary

D.Reference

E.Single reference

F.Secondary reference

**Correct:B**

**17.Which is an example of the single reference time synchronization method for a network that has 15 NetWare 6 servers?**

A.1 primary time server and 14 secondary time servers

B.2 primary time servers and 13 secondary time servers

C.1 single reference time server and 14 secondary time servers

D.2 single reference time servers and 13 secondary time servers

E.1 reference time server, 2 primary time servers, and 12 secondary time servers

F.1 single reference time server, 1 primary time server, and 13 secondary time servers

**Correct:C**

**18.You recently completed a Remote Upgrade to NetWare 6.5 on a server located in your organization's Baltimore, MD. office. You realize that you forgot to install MySQL on the server during the upgrade. Which NetWare utilities can you use to remotely install this product? (Choose 2)**

A.iMonitor

B.iManager

C.ConsoleOne

D.Deployment Manager

E.NetWare Administrator

F.NetWare GUI Install utility using Remote Manager

**Correct:D F**

**19.You want to upgrade a NetWare 6 server with Support Pack 2 to NetWare 6.5. The server hardware uses a Pentium III 500 MHz Celeron CPU, 512 MB RAM, an 8 GB hard disk drive with a 200 MB DOS partition, and a USB mouse. Can this server be upgraded?**

- A.Yes, the server meets all prerequisite requirements.
- B.No, NetWare 6.5 requires a PIII 750 MHz CPU or later.
- C.No, NetWare 6.5 isn't compatible with Celeron processors.
- D.No, the server's CPU is too slow and the hard disk drive is too small.
- E.No, the server's DOS partition is too small and USB mice aren't supported.
- F.No, the server doesn't have enough RAM and must have Support Pack 3 or later applied.
- G.No, the server's DOS partition is too small and must have Support Pack 3 or later applied.

**Correct:G**

**20.Which statements about using both SLP and configured lists for time synchronization are true? (Choose 2)**

- A.Using both adds extra traffic on the network.
- B.Using both provides fault tolerance for time synchronization.
- C.Time doesn't synchronize if both SLP and configured lists are used.
- D.Using both allows IP and IPX servers to synchronize with each other.
- E.Using both shortens the amount of time it takes to synchronize time throughout the network.

**Correct:A B**