

# T estpassport問題集



---

更に上のクオリティ      更に上のサービス

一年で無料進級することに提供する  
[Http://www.testpassport.jp](http://www.testpassport.jp)

**Exam** : **070-178**

**Title** : Microsoft Project 2010,  
Managing Projects

**Version** : Demo

1. A section of your project contains only a summary task along with four subtasks and a milestone. You discover that the section is located in the incorrect phase and has the incorrect Work Breakdown Structure (WBS) numbering. You need to move the section to another phase of the project. You also need to ensure that the section reflects the correct WBS numbering. What should you do?

- A. Select the summary task and change the scheduling mode to Manually Scheduled.
- B. Select the entire section and click Move Task.
- C. Drag the summary task.
- D. Modify the start and finish dates of the summary task.

**Answer: C**

2. You have a Project 2010 schedule that contains the following tasks:

- Inactive tasks
- Manually scheduled tasks
- Manually scheduled summary tasks
- Tasks that contain strikethrough font

You want to save the schedule as a Project 2007 project. You need to ensure that no new milestones are created. What should you do.?

- A. Change all inactive tasks to active tasks.
- B. Change all tasks that contain strikethrough font to tasks that include normal font.
- C. Change all manually scheduled summary tasks to automatic scheduling.
- D. Change all manually scheduled tasks to automatic scheduling.

**Answer: C**

3. You manage several projects. Each project has shared resources and work distribution. You need to ensure that you can adjust the workload for specific resources used across multiple project schedules. What should you do?

- A. Enable the Load Summary Resource Assignments option. Then, select the Level Resource function on each project.
- B. Open the individual schedules and use the Visual Reports option. Then, use the Resource Usage view to manually modify resource Work.
- C. Open a blank project and select Insert Subproject for each project schedule. Then, use the Level Resource function for selected resources.
- D. Open the shared Resource Pool for each project schedule. Then, use the Level Resources function.

**Answer: C**

4. You manage a project that specifies all constraint types to As Soon As Possible. You discover that one of your key tasks is scheduled to end prior to the targeted finish date. You need to display the targeted finish date on the default Gantt chart. What should you modify in the Task Information window?

- A. Set the Deadline date field.
- B. Set the Constraint date field.
- C. Set the Finish date field.
- D. Select the Mark task as milestone check box.
- E. Select the Display on Timeline check box.

**Answer: A**

5. The first major phase of your project is scheduled for a duration of 45 days. However, you do not have task information for other phases. You need to indicate that the duration of the entire project is 200 days. What should you do?

- A. Select the Project Summary Task option.
- B. Select the Summary Tasks option.
- C. Create a manually scheduled summary task.
- D. Update the project calendar.

**Answer: C**

6. The project you manage has only part-time resources. The part-time resources work four hours a day from Wednesday through Saturday. You need to create a new calendar and set the calendar as the default for your project. Which two actions should you perform? Each correct answer presents part of the solution.

- A. Select the part-time calendar from the Change Working Time window.
- B. Set the calendar type to part-time for all tasks.
- C. Select the part-time calendar from the Project Information window.
- D. On the Project tab, Select Change Working Time, and then click Create New Calendar.
- E. Change the Calendar type in the Project Options dialog box.

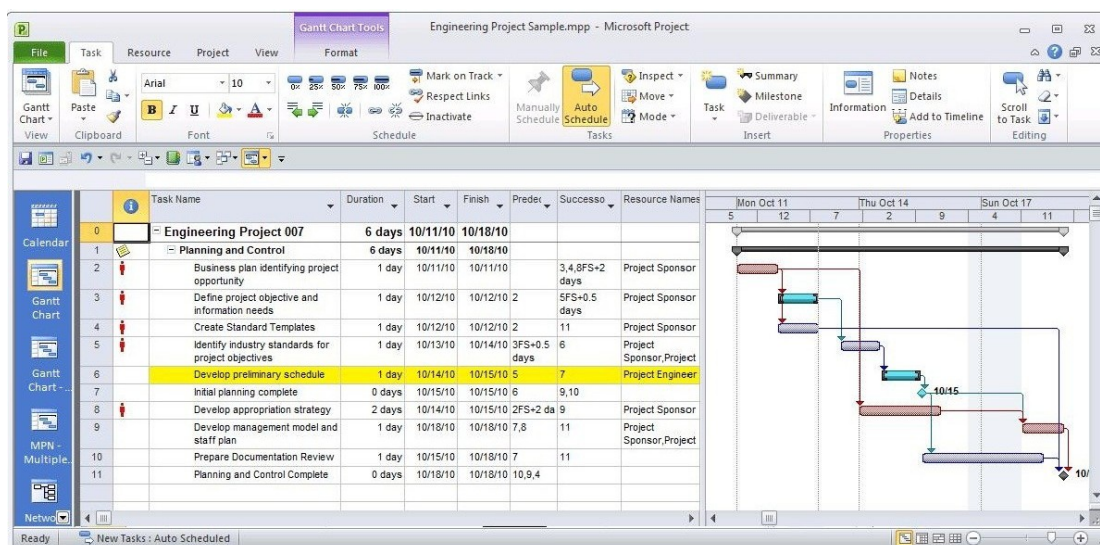
**Answer: CD**

7. You need to set the default constraint type for all new tasks to As Late As Possible. What should you do?

- A. Select all tasks, and then click Layout.
- B. In the Options dialog box, enable the New Tasks are effort driven check box.
- C. Select all tasks, and then set the constraint type to As Late As Possible.
- D. In the Project Information window, from the Schedule From drop-down list box, select Project Finish Date.

**Answer: D**

8. You manage a project according to the schedule as shown in the exhibit.



You need to set the Task Mode for task 4 to be the same as task 6. What should you do?

- A. Create a task dependency from Task 4 to Task 6.
- B. Set Task 4 as critical.
- C. Add a 1 day lead to Task 4.
- D. Set Task 4 as manually scheduled.

**Answer: D**

9.You use bottom-up scheduling. You need to group four consecutive tasks in a major phase. You highlight the four tasks. Which command should you use?

- A. Outdent
- B. Fill Down
- C. Insert Summary
- D. Move Task

**Answer: C**

10.You need to view Task ID 0 on your project plan. What should you do?

- A. On the Advanced tab of the Project 2010 options, select Show Status Bar.
- B. On the Format tab, select Summary Tasks.
- C. On the Format tab, select Project Summary Task.
- D. Insert a new Summary Task.

**Answer: C**