

T estpassport問題集



更に上のクオリティ 更に上のサービス

一年で無料進級することに提供する
[Http://www.testpassport.jp](http://www.testpassport.jp)

Exam : **070-217**

Title : Implementing and
Administering a Microsoft
Windows 2000 Directory
Services Infrastructure

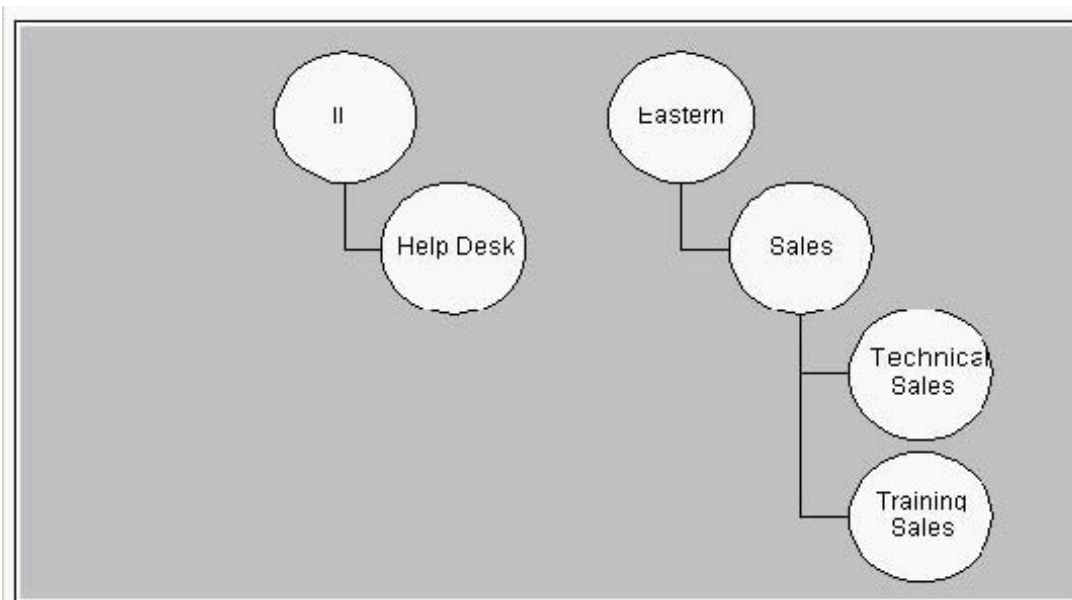
Version : DEMO

1. You are the LAN administrator for Arbor Shoes. You hire Sophie to be a LAN administrator for the Dublin office. Arbor Shoes has one domain named arborshoes.com. Each office has its own organizational unit (OU). Sophie needs to be able to create child OUs under only ou=Dublin,dc=arborshoes,dc=com and verify the existence of the created OUs. Which permissions should you assign to Sophie on the Dublin OU? (Choose three.)

- A. Full Control
- B. List Contents
- C. Create Organizational Unit Objects
- D. Create All Child Objects
- E. Write
- F. Read

Answer: BCF

2. You are the network administrator for Contoso, Ltd. Marc is moving from the IT department to the sales department and will be the technical sales manager for the eastern United States. The current OU structure is shown in the exhibit. (Click the Exhibit button.) You move Marc's user account from the IT OU to the Technical Sales OU. You want Marc to be able to create user accounts in ou=sales,ou=eastern,dc=contoso,dc=com. What should you do?



- A. Move Marc's user account to the Sales OU.
- B. Add Marc's user account to the Account Operators group.

C. Grant Marc's user account Create User Objects permission for the Sales OU.

D. Grant Marc's user account Write permission for the Sales OU.

Answer: C

3. You are the administrator of the Arbor Shoes company network. There is one domain named arborshoes.com. The domain contains three sites named Geneva, Milwaukee, and Portland. Each site has two domain controllers from the arborshoes.com domain. Geneva and Portland each have 1,000 users. Milwaukee has 500 users. There are two IP site links: Geneva_Portland and Milwaukee_Portland. You want to add another domain controller in each site to handle all replication from each site. What should you do?

A. Configure each new domain controller to be the IP preferred bridgehead server for its site.

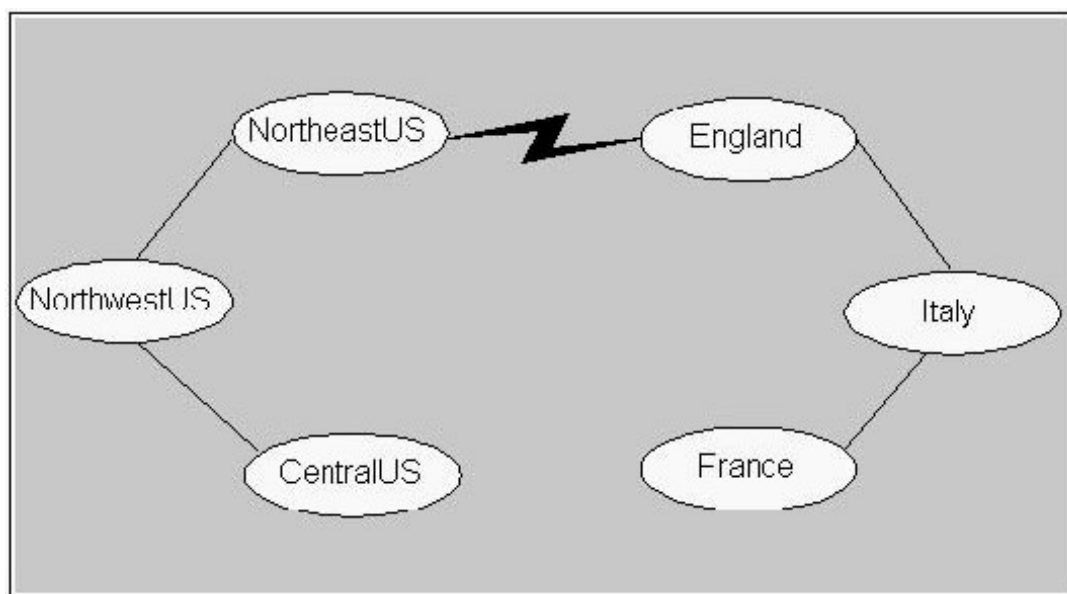
B. Create a connection object from each domain controller in each site to the new domain controller in each site.

C. Create a new site link that has a lower cost than the existing site links.

D. Delete the existing connection objects in each site and manually start the Knowledge Consistency Checker (KCC).

Answer:A

4. You are the administrator of a Windows 2000 network for your company. Your company has three locations in North America and three locations in Europe. Your network includes six sites as shown in the exhibit. (Click the Exhibit button.) The England, France, and Italy sites are in the eur.blueskyairlines.com domain. The NorthwestUS, CentralUS, and NortheastUS sites are in the na.blueskyairlines.com domain. The root of the forest is blueskyairlines.com. The connection between the NortheastUS site and the England site is unreliable. You want to configure replication between the NortheastUS site and the England site. What should you do?



- A. Create an SMTP site link between the NortheastUS site and the England site.
- B. Create an IP site link between the NortheastUS site and the England site.
- C. Create an SMTP site link bridge between the NortheastUS site and the England site.
- D. Create an IP site link bridge between the NortheastUS site and the England site.

Answer:A

5. You add a new domain controller named GC01 to your network to take the place of the existing global catalog server. You also enable GC01 as a global catalog. You want to use GC00, the original server, as a domain controller, but not as a global catalog server for the domain. You want to increase disk space on GC00. What should you do? (Choose all that apply.)

- A. Use Active Directory Sites and Services. Select the NTDS Settings object for the GC00 server to clear the Global Catalog check box.
- B. On the GC00 server, run the Ntdsutil utility to defragment Active Directory.
- C. On the GC00 server, reinstall Windows 2000.
- D. On the GC01 server, run the Ntdsutil utility to enable the global catalog server option.

Answer:AB

6. You are the administrator of a Windows 2000 network. You create global groups and Domain Local groups for the accounts payable and accounts receivable departments. The Domain Local group named AP has Change permission for the Accounts Payable folder. The Accounts Payable folder is a subfolder of the Accounting folder. The Accounts Payable global group is a member of the AP Domain Local group. Fred's user account is a member of the Accounts Payable global group. Fred moves from the accounts

payable department to the accounts receivable department. Fred now needs to access only accounts receivable information. You remove Fred's user account from the Accounts Payable global group, but Fred is still able to access documents in theAccounts Payable folder. What are two possible causes of this problem? (Choose two.)

- A. Fred's user account has explicit permissions on the Accounting folder.
- B. Fred's user account belongs to another group that gives him permissions on the Accounts Payable folder.
- C. The Accounting folder is not published in Active Directory.
- D. The Accounts Payable folder is on a FAT32 partition.
- E. The AP Domain Local group is not a member of the Accounts Payable global group.

Answer:AB

7. You add three new SCSI hard disk drives to your company's domain controller. The SCSI disks are configured in ahardware RAID-5 array. You have two other physical disks in this domain controller. You want to optimize the speed of the Active Directory database. What can you do? (Choose two.)

- A. Move the Ntfs.dit file to the RAID-5 array.
- B. Move the log files to a separate physical disk from the operating system.
- C. Move the log files and the Ntfs.dit file to the RAID-5 array.
- D. Move the Netlogon share to the RAID-5 array.
- E. Create a mirror volume and place the log files on the mirror.

Answer:AB

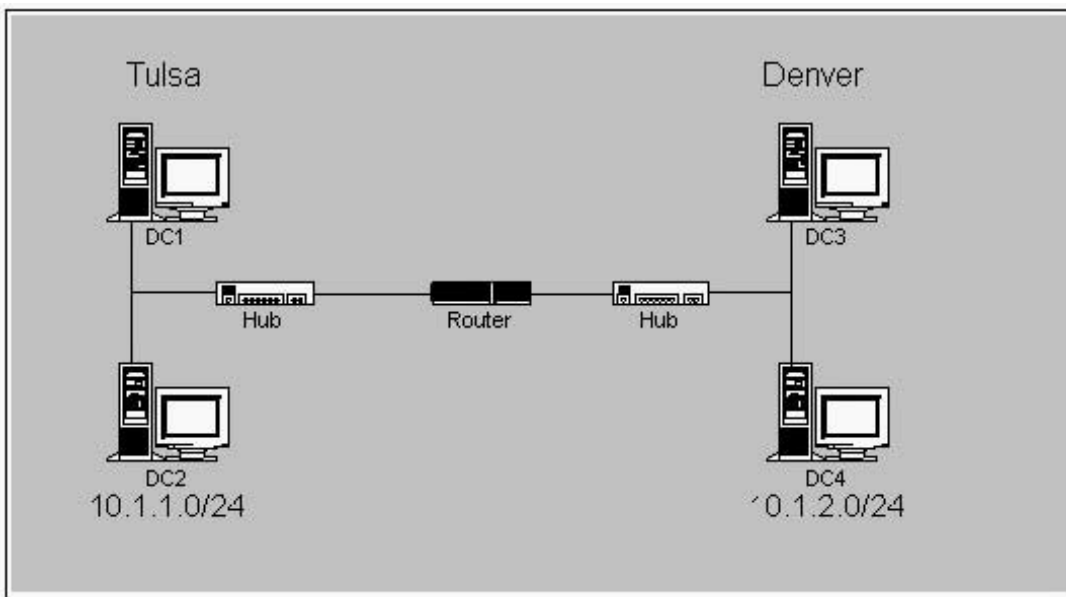
8. You are the administrator of a Windows 2000 network. Your current domain controller's hard disk drive is failing. Youinstall a new server as a domain controller to replace the failing domain controller. You ran DCPromo.exe on the failing domain controller in your domain to remove Active Directory. While you were running DCPromo.exe, the hard disk drive failed. The server will not reboot. However, the objects for the failed serverare still appearing in Active Directory. You are using the Ntfsutil utility to remove the objects. You want to remove the old server from Active Directory. Which option should you use?

- A. metadata cleanup
- B. semantic database analysis
- C. security account management
- D. domain management

E. authoritative restore

Answer:A

9. You are the administrator of a Windows 2000 network named contoso.com. Your network is configured as shown in the exhibit. (Click the Exhibit button.) Your company plans to open a new office in Dallas. Members of your IT staff will be on-site in Dallas next week to install the new 10.1.3.0/24 network. You want to prepare the network in advance so that when the IT staff installs a new domain controller, it will automatically join the appropriate site. What should you do?



A. Delete the Default-First-Site-Name object in Active Directory Sites and Services.

B. Create a new subnet for the Dallas network. Create a new site and associate the new subnet with the new site.

C. In the Domain Controller OU, create a computer account that has the name of the new domain controller.

D. Use RIS to prestage the new domain controller.

E. Copy the installation source files to the new domain controller. Create an unattended install file with an automated DCPromo.bat file.

Answer: B

10. You are the administrator of your company's network. The network consists of one Windows NT 4.0 domain. You create and implement a security policy that is applied to all Windows 2000 Professional client computers as they are staged and added to the network. You want this security policy to be in effect at all times on all client computers on the network. However, you find out that administrators periodically change security settings on computers when they are troubleshooting or doing maintenance. You want to automate the security analysis and configuration of client computers on the network so that you can track

changes to security policy and reapply the original security policy when it is changed. What should you do?

- A. Use Windows NT System Policy to globally configure the security policy settings on the client computers.
- B. Use Windows 2000 Group Policy to globally configure the security policy settings on the client computers.
- C. Use the Security and Configuration Analysis tool on the client computers to analyze and configure the security policy.
- D. Schedule the Secedit command to run on the client computers to analyze and configure the security policy.

Answer: D