

T estpassport問題集



更に上のクオリティ 更に上のサービス

一年で無料進級することに提供する
[Http://www.testpassport.jp](http://www.testpassport.jp)

Exam : **1Y0-700**

Title : Citrix Application Firewall
8.0: Administration Exam

Version : DEMO

1. An administrator is considering adding an Application Firewall deployment to an environment that contains two network firewalls, a public network and a private network. Where should the administrator place the Application Firewall?

- A. In the DMZ
- B. Behind the private network
- C. In front of the public network
- D. In front of the two network firewalls

Answer:A

2. The positive security model as applied in the Application Firewall can protect against _____ and _____ attacks. (Choose the two options that best complete the sentence.)

- A. worms
- B. viruses
- C. zero day
- D. layer 3 network
- E. application layer

Answer:CE

3. Scenario: A banking company has decided to deploy an Application Firewall in their network environment, which already has two third-party load balancers. The Application Firewall deployment will be used to inspect approximately 400 Mb/sec of traffic. How should an administrator deploy the system in this environment?

- A. As a module on a NetScaler appliance
- B. As a standalone Application Firewall appliance
- C. As a module on a NetScaler High Availability pair
- D. As a cluster of standalone Application Firewall appliances

Answer:D

4. Scenario: A busy web application (400 Mb/sec) for an ecommerce company includes pictures of items for sale that are displayed to shoppers with text descriptions, an input field to accept customer reviews, a

shopping cart and an encrypted billing page for credit cards. Many more customers browse than buy. An administrator needs to create profiles for this web application on the Application Firewall. How many profiles should an administrator configure for this web application for security with maximum performance?

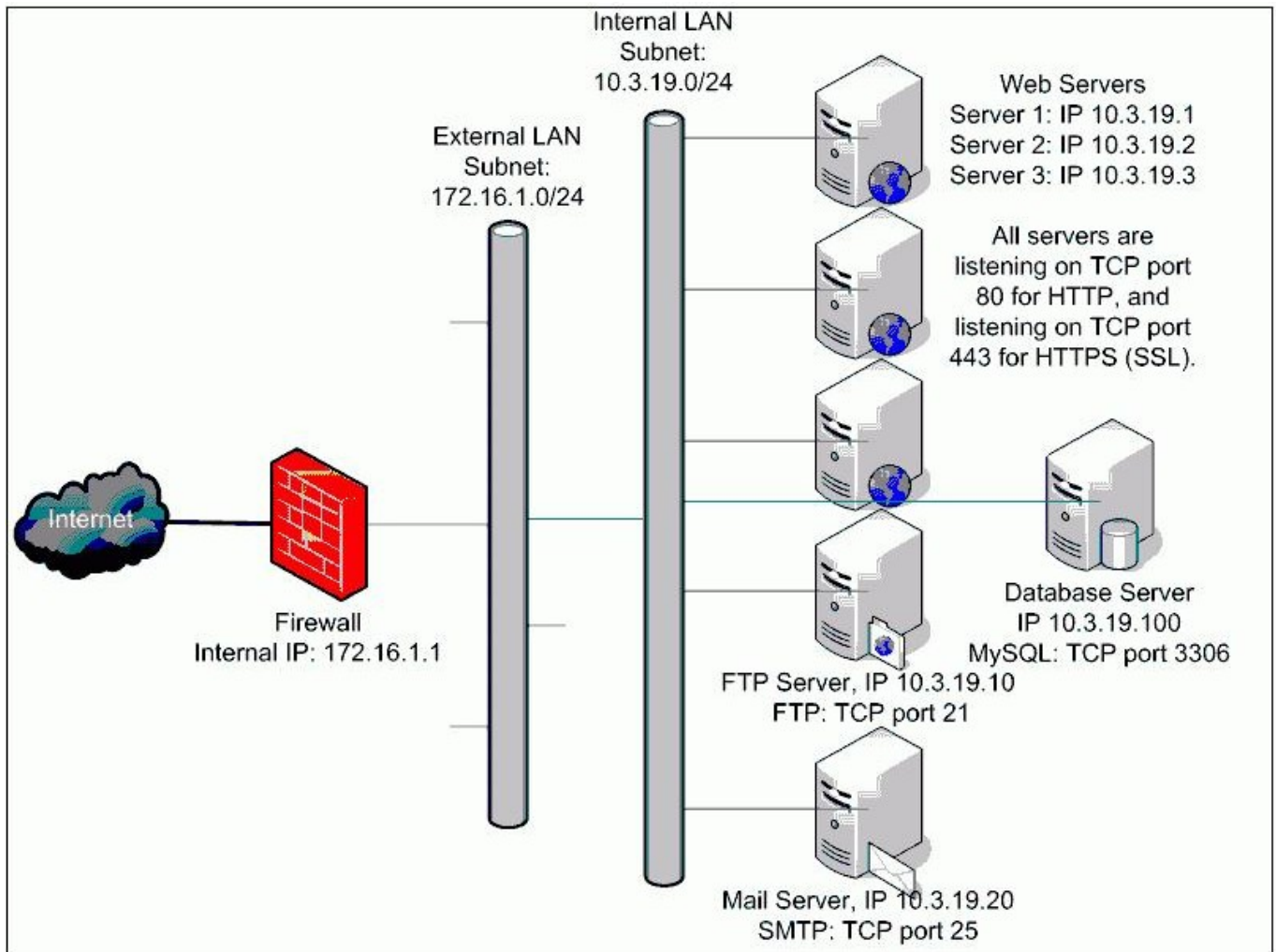
- A. One, an advanced profile for the reviews and billing pages
- B. Two, a basic profile for the reviews page and an advanced profile for the billing page
- C. Three, a basic profile for browsing and separate advanced profiles for the reviews and the billing pages
- D. Four, separate basic profiles for the images and text, and separate advanced profiles for the reviews and the billing pages

Answer:B

5. An administrator is deploying a standalone Application Firewall in the network environment depicted in the exhibit.

Click the Exhibit button to view the network diagram.

What should the VIP address range be for the Application Firewall in this environment?



- A. 1.1.100.0/24
- B. 10.3.19.0/24
- C. 172.16.1.0/24
- D. 10.3.19.100/124

Answer:C

6. Scenario: The manufacturing department of a global biomedical company uses a web application to access manufacturing ratios and QA testing results from external plants that manufacture the biomedical devices. All the information for all the plants is stored in a data warehouse based on a Microsoft SQL server and accessed from the web application by running reports. Users receive instructions through a popup and then select the specific data for a report through a series of dynamically-generated drop-down menus populated from the Microsoft SQL database. Because the company is global, the web application also has language options that the user can select for the report to be delivered in.

Which part of the application can access sensitive data in this scenario?

- A. The popup
- B. The language options
- C. The resultant URL for a report
- D. The drop-down menus for the report details

Answer:D

7. Scenario: A media corporation has a website where viewers can read articles on current topics and stream videos of daily newscasts. The streaming videos are provided by IPTV, a streaming media application utilizing UDP. The company decides to add an Application Firewall to their network deployment to protect their site from hackers. To determine how many devices are necessary, the administrator must determine which traffic requires protection.

Which content data type(s) does the Application Firewall need to inspect in this environment?

- A. Text/html
- B. Images and text/html
- C. UDP packets and text
- D. Text/html, UDP packets and images

Answer:A

8. The positive security model works with Application Firewall by _____. (Choose a phrase to complete this statement correctly.)

- A. protecting web servers based on learning
- B. protecting web servers based on signatures
- C. only allowing traffic that matches approved patterns
- D. allowing traffic that does not match blocked patterns

Answer:C

9. Scenario: A banking company is planning on deploying an Application Firewall in their network environment. The company will need to use SSL, plans on using Advanced profiles, and requires redundancy in their network. The web servers never serve more than 300 Mb/sec of traffic. How should

an administrator deploy the Application Firewall in this environment?

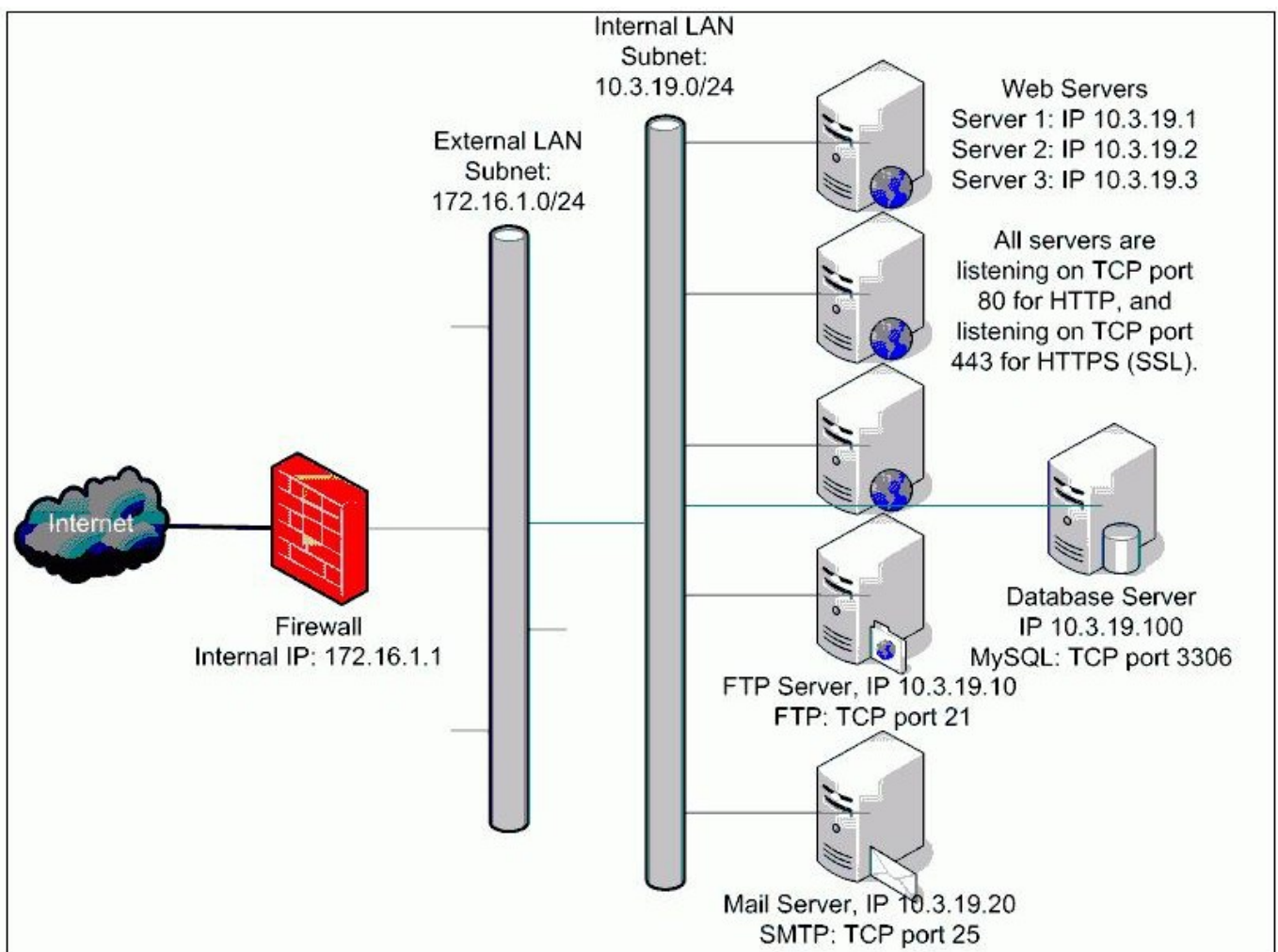
- A. As a standalone appliance
- B. As a module on a NetScaler
- C. As a cluster of standalone appliances
- D. As a module on a NetScaler High Availability pair

Answer:D

10. An administrator is deploying a standalone Application Firewall in the network environment depicted in the exhibit.

Click the Exhibit button to view the network diagram.

What should the NSIP address of the Application Firewall be in this environment?



- A. 10.3.19.0
- B. 172.16.1.1

C. 172.16.1.2

D. 10.3.19.254

Answer:C