

# T estpassport問題集



---

更に上のクオリティ      更に上のサービス

一年で無料進級することに提供する  
[Http://www.testpassport.jp](http://www.testpassport.jp)

**Exam** : **1Z0-151**

**Title** : Oracle Fusion Middleware  
11g: Build Applications with  
Oracle Forms

**Version** : Demo

1.The Credit\_Rating item in the Customers block of an Order Entry form must be restricted to three possible values: Good, Poor, or Null (the latter value indicates that the credit rating has not been determined). Order entry clerks must be able to update this item to any of the preceding three values. You want to change the item to a check box labeled "Credit Risk" that should be selected if the customer has poor credit, the check box should not be selected if the customer's credit rating is good or undetermined.

Label	Credit Risk
Access Key	
Implementation Class	
Value when Checked	Bad
Value when Unchecked	Good
Check Box Mapping of Other Values	Unchecked
Popup Menu	<Null>
<b>Navigation</b>	
Keyboard Navigable	Yes
Mouse Navigate	Yes
Previous Navigation Item	<Null>
Next Navigation Item	<Null>
<b>Data</b>	
Data Type	Char
Data Length Semantics	BYTE
Maximum Length	4
Initial Value	

You change the item type to Checkbox, set other properties as shown in the Exhibit, and then run your form and insert three records: two with good credit and the check box deselected, and one with poor credit and the check box selected. You commit the data and query the records, with the following result set: The first two records show an undetermined credit rating, although your intention was to set the value to Good for these customers.

What change must you make in the properties of the Credit\_Rating item to enable values of Good, Poor, and Null to be entered?

CUST_ID	FIRST_NAME	LAST_NAME	CREDIT_RATING
10001	Gamer	Pam	
10002	Wallace	Sheila	
10003	Maslen	Glenn	Poor

- A. Change the initial Value property to Good.
- B. Change the Check Box Mapping of Other Values property to Not Allowed.
- C. Change the initial Value property to Good and the Value When Unchecked property to Null.
- D. Change the initial Value property to Good and the Check Box Mapping of Other Values property to Null.

E. Change the initial Value property to Good and the Check Box Mapping of Other Values property to checked.

F. Change the item type. It is not appropriate to use a check box to enable entry and update of more than two values in an item.

**Answer: E**

2. When tabbing through items in the Employees form, users should not be able to navigate to the Salary text item. If they need to update the item, they will have to explicitly navigate to it by using the mouse. Which property setting accomplishes this requirement.?

- A. Enabled = Yes; Keyboard Navigable = No
- B. Enabled = No; Keyboard Navigable = Yes
- C. Enabled = Yes; Keyboard Navigable = Yes
- D. Enabled = No; Keyboard Navigable = No
- E. Automatic Skip = Yes

**Answer: C**

3. You have a text item in your form named Object1. You want to create Object2 as an exact duplicate of Object1. You want to be able to change the properties of Object2. However if you change Object1, you do not want Object2 to change.

Which method of reusing Object1 would be best for these requirements?

- A. Copying Object1
- B. Subclassing Object1
- C. Creating a property class from Object1
- D. Putting Object1 in an Object library
- E. Referencing Object1 in a PL/SQL library

**Answer: A**

4. The Orders form has four blocks. The Orders and Order\_items block are on the CV\_Order content canvas; the inventories block items are on the CV\_inventories content canvas; and Control block buttons are on the CV\_Buttons toolbar canvas. All buttons have mouse Navigate set to No.

The Order\_Items block is a detail of Orders. The inventories block is a detail of Order\_Items, showing the stock of the selected product.

There is a button in the Control block with a When-Button-Pressed trigger:

```
IF GET_CANVAS_PROPERTY(:SYSTEM.cursor_item, item_canvas) = 'CV_ORDER' THEN
GO_BLOCK ('inventories')
ELSE
GO_BLOCK ('orders');
END IF;
```

When you run the form and click the button, navigation does not occur, and the form displays the runtime error "FRM-41053: Cannot find Canvas: invalid ID."

What should you do to correct this problem?

- A. Change the sequence of blocks in the Object Navigator

- B. Change the Mouse Navigator property of the button to yes
- C. in the first line of code, change the built-in GET\_ITEM\_PROPERTY
- D. in the first line of code, change the system variable to: SYSTEM.CURSOR\_CANVAS.
- E. in the first line of code, change the CV\_ORDER to lowercase
- F. Change the argument to the GO\_BLOCK built-ins to uppercase

**Answer: D**

5. Which four types of variables must have their names preceded by a colon when they are referenced in trigger code?

- A. PL/SQL variables
- B. Form items
- C. global variables
- D. system variables
- E. parameters

**Answer: A,B,C,D**

6. The Order Entry application contains several forms. The inventories form uses an LOV that is based on a record group that queries the Warehouses table to return a warehouse ID.

Several of the forms use LOVs that are based on the same query. You decide to centralize the creation of the record group to the entry form of the application, which opens all the other forms, for example, to open the inventories form, there is a When-Button Pressed trigger on the inventories button with the following code;

```
OPEN_FORM ('inventories');
```

in a When-New-Form-instance trigger for the entry form, you create the warehouse\_rg record group by using the CREATE\_GROUP\_QUERY built in with the following arguments:

```
('warehouse_rg' , 'SELECT ALL WAREHOUSE.WAREHOUSE_ID, WAREHOUSE.WAREHOUSE_NAME  
FROM WAREHOUSE order by warehouse_name');
```

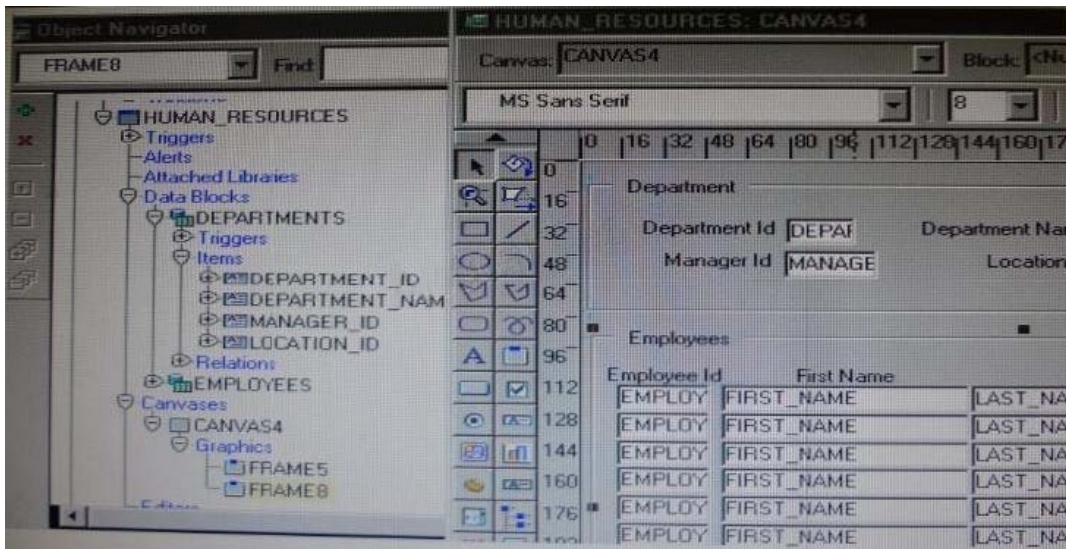
You also populate the record group in this trigger.

What must you do to make this record group available to the inventories form and the other forms?

- A. in the When-New-Form-instance trigger for the entry form, add a value for the SCOPE argument of CREATE\_GROUP\_QUERY.
- B. in the entry form, move the record group code to the end of the When-Button-Pressed triggers for the buttons that open other forms, so that the record group is created and populated immediately after OPEN\_FORM is called.
- C. in the entry form, move the record group code to the beginning of the When-Button-Pressed triggers for the button that open other forms, so that the record group is created and populated just before OPEN\_FORM is called.
- D. in the When-Button\_Pressed triggers of the entry form from the buttons that open other forms, add a value for the SESSION argument of OPEN\_FORM.
- E. in the other forms, refer to the record group as: global.warehouse\_rg.

**Answer: A**

7. View the Exhibit.



In the Human Resources form shown in the Exhibit, you want to modify the prompts, heights, and widths of the Department Id, Manager Id, and Location Id Holds in the Departments data block.

What must you select before invoking the Layout Wizard in reentrant mode to modify these item properties?

- A. Frame5
- B. Frames
- C. Canvas4
- D. the Departments block
- E. the DEPARTMENT\_ID, MANAGER\_ID and LOCATION\_ID items

**Answer: C**

8. You are implementing a JavaBean in a form, the bean has no visible component on the form when invoked, the bean displays an input text where users enter a zip code, the bean has a single method that returns a short weather forecast for that zip code as a character value.

How can you retrieve that value so that you can display it to the user?

- A. Use FBEAN.ENABLE\_EVENT to register a listener for the bean event. Obtain the value of SYSTEM.CUSTOM\_ITEM\_EVENT in a When-Custom item Event trigger, and then use that value as an argument to the MESSAGE builtin.
- B. Use FBEAN.REGISTER\_BEAN as an argument to the MESSAGE builtin to invoke the bean's method and return the value as a message displayed to the user.
- C. Use FBEAN.REGISTER\_BEAN to register the bean, so that when the user enters a zip code into the bean's input text, the value is automatically displayed in the bean area item.
- D. Use FBEAN.ENABLE\_EVENT to register a listener for the bean event. Obtain the value of SYSTEM.CUSTOM\_EVENT\_PARAMETER in a When-Custom-item-Event trigger, and then use that value as an argument to the MESSAGE builtin.

**Answer: D**

9. The Orders database table uses Order\_id as its primary key. You have written the following code to use in the Orders block of a form:

```
SELECT orders_seq.NEXTVAL
```

```
INTO :orders.order_id
```

```
FROM SYS.dual;
```

Which statement is true about this code?

- A. If you place this code in a trigger that fires when the record is inserted into the database, you will likely have more gaps in Order IDs than if you use the sequence as a default value for the item.
- B. If you place this code in a trigger, you should ensure that Order\_Id has its required property set to Yes.
- C. If you place this code in a trigger, you should ensure that Order\_Id has its Database Item property set to No.
- D. If the named sequence does not exist, it is automatically created the first time the code is called.
- E. You should place this code in a database trigger to minimize the gaps in Order IDs.
- F. You should place this code in a Pre-insert trigger to minimize the gaps in Order IDs.
- G. You should place this code in a Post\_insert trigger to minimize the gaps in Order IDs.

**Answer: F**

10. In Forms Builder, the iconic buttons on the form are blank, but when you click Run Form the form appears in the browser with images in the iconic buttons.

What are two things that you can check to track the source of this problem?

- A. forms Builder runtime preferences
- B. the UI\_ICON setting in the operating system
- C. the iconpath setting in the Forms registry file
- D. the UI\_ICOM\_EXTENSION setting in the operating system
- E. the iconextension setting in the Forms registry file
- F. the FORMS\_PATH setting in the Forms environment file
- G. the classpath setting in the operating system

**Answer: B,C**

11. You want to display employee records in tabular format, but the form is not wide enough to display all the items in the Employees block. The employee IDs and names of displayed records should always be visible, but you want to scroll the additional information as users tab through the items, the form should look like a spreadsheet with the first two columns frozen.

Which canvas types would be most appropriate in this scenario?

- A. content canvas in a window with a horizontal scroll bar
- B. content canvas and multiple tab canvases
- C. content canvas and a tab canvas with multiple tab pages
- D. content canvas and a stacked canvas with a horizontal scroll bar
- E. multiple content canvases

**Answer: C**

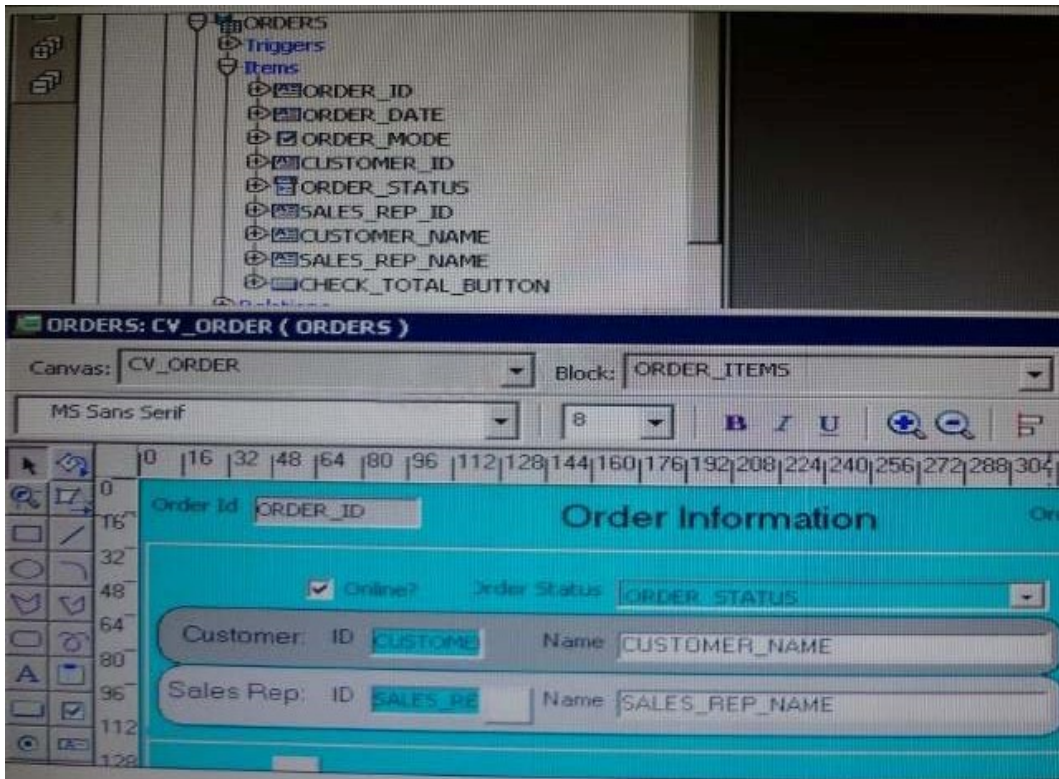
12. You have created a complex menu structure with several types of menu objects. To which objects would you assign menu commands?

- A. main menus
- B. individual menus
- C. submenus
- D. menu items

E. all of the above

**Answer: E**

13.View the Exhibit.



The Departments table in the database contains four columns. In a new form, you use the Data Block Wizard to add all columns to the block, but in the layout Wizard, you choose all columns except Location\_Id to add to the canvas. The Object Navigator and layout Editor appear as shown in the Exhibit. You then decide that you do need to display Location\_Id on the canvas.

What object must you select before invoking the Layout Editor in re-entrant mode to make this change?

- A. the text item tool in the Layout Editor
- B. Frame 16 in neither the Object Navigator or the layout Editor
- C. Canvas 4 in neither the Object Navigator or the Layout Editor
- D. Location\_Id in the Object Navigator
- E. the Departments data block in the Object Navigator

**Answer: D**

14.To avoid overloading the database during busy times, you decide to restrict the queries that are executed on the Orders form so that users query by either Order ID or Customer ID during these times. Which trigger is most appropriate for the code to enforce this restriction?

- A. When-New-Form-instance
- B. When-New-Block-instance
- C. On-Query
- D. Pre-Query
- E. Post-Query

**Answer: D**



15. You have created an editor named MyEditor, and you want it to be available to edit the text item Product\_Description. You can associate the editor with the text item by setting the Editor property of Product\_Description to MyEditor.

- A. True
- B. False

**Answer:** A