

T estpassport問題集



更に上のクオリティ 更に上のサービス

一年で無料進級することに提供する
[Http://www.testpassport.jp](http://www.testpassport.jp)

Exam : **1Z0-311**

Title : Oracle application server
10g:Administration

Version : DEMO

1.A portal user named USER1 registered a new database provider with the OracleAS Portal instance. What are the actions that are implicitly performed as a result of the registration? (Choose all that apply.)

- A.A new page is created in the Portlet Repository page group.
- B.The provider registration information is saved in the dads.conf file.
- C.The provider registration information is saved in the portlet repository.
- D.A new database schema is created with the same name as the provider.

Correct:A C

2.What makes it possible to access the portal from the OracleAS SSO Administer Partner Applications page?

- A.The administrator registers the portal manually to OracleAS SSO using the ossoreg.jar tool.
- B.The registration of the first external application with OracleAS SSO adds OracleAS Portal as a partner application.
- C.The ssocfg.sh script needs to be executed first to access the portal from the OracleAS SSO Administer Partner Applications page.
- D.During OracleAS middle-tier installation, the installer automatically adds the OracleAS Portal as a partner application for OracleAS SSO.

Correct:D

3.Today, most Java 2, Enterprise Edition (J2EE) applications use a database to have a persistent storage for data. Which two statements regarding the data source are true? (Choose two.)

- A.J2EE applications cannot use more than one data source.
- B.J2EE applications use the data source to ensure portability across application servers.
- C.J2EE applications retrieve connections to the database through DataSource objects.
- D.J2EE applications use the data source to store the Java Naming and Directory Interface (JNDI) tree.

Correct:B C

4.Which statements describe the functionality of OracleAS Single Sign-On? (Choose all that apply.)

- A.It can be used in either a secure sockets layer (SSL) mode or a non-SSL mode.
- B.It uses Single Sign-On SDK to enable the single sign-on functionality.
- C.It uses Oracle Application Server Containers for J2EE (OC4J) to store user information.
- D.It uses the Single Sign-On username and password from the Oracle Internet Directory (OID) to authenticate users.

Correct:A D

5.You want to install Oracle Application Server 10g middle tier that enables you to generate Web-based reports and authenticate users accessing the middle-tier components. Which components must you have installed before you start installing OracleAS Portal and Wireless? (Choose all that apply.)

- A.Identity Management
- B.J2EE and Web Cache
- C.OracleAS Developer Kits
- D.OracleAS Metadata Repository

Correct:A D

6.In Oracle Internet Directory (OID), which Directory Information Tree (DIT) attribute would you use to find out the object classes that are available in Identity Management Realm?

- A.orclUserObjectClass

- B.orclCommonUserSearchBase
- C.orclCommonGroupSearchBase
- D.orclCommonUserNickNameAttribute

Correct:A

7.While setting up the Oracle HTTP Server (OHS) for your Oracle Application Server 10g installation, you want to enable the server to set a host name that can be used to create redirection URLs, using the ServerName directive. Within which two scopes can you specify the directive in the httpd.conf file? (Choose two.)

- A.in a block container
- B.in a location container
- C.in a directory container
- D.in a virtual host container
- E.in the server-level configuration

Correct:D E

8.You have not set the Subscriber Search Base node in Directory Information Tree (DIT) in Identity Management Realm by using the orclSubscriberSearchBase attribute. You use Discovery mechanism to find out user information in the DIT. Which statement is true in this scenario?

- A.This attribute cannot have null values.
- B.This attribute value points to the parent of Default Subscriber.
- C.This attribute would have the same value as User Search Base.
- D.This attribute would have the same value as Default Subscriber.
- E.This attribute would have the same value as Subscriber Nickname.

Correct:B

9.You have a text file written in LDAP Data Interchange Format (LDIF) that contains the entries to be added to the Oracle Internet Directory (OID). Using this text file as a source file, you want to add the entries concurrently using multiple threads. Which OID command-line tool would you use?

- A.Idapadd
- B.Idapbind
- C.Idapmoddn
- D.Idapaddmt

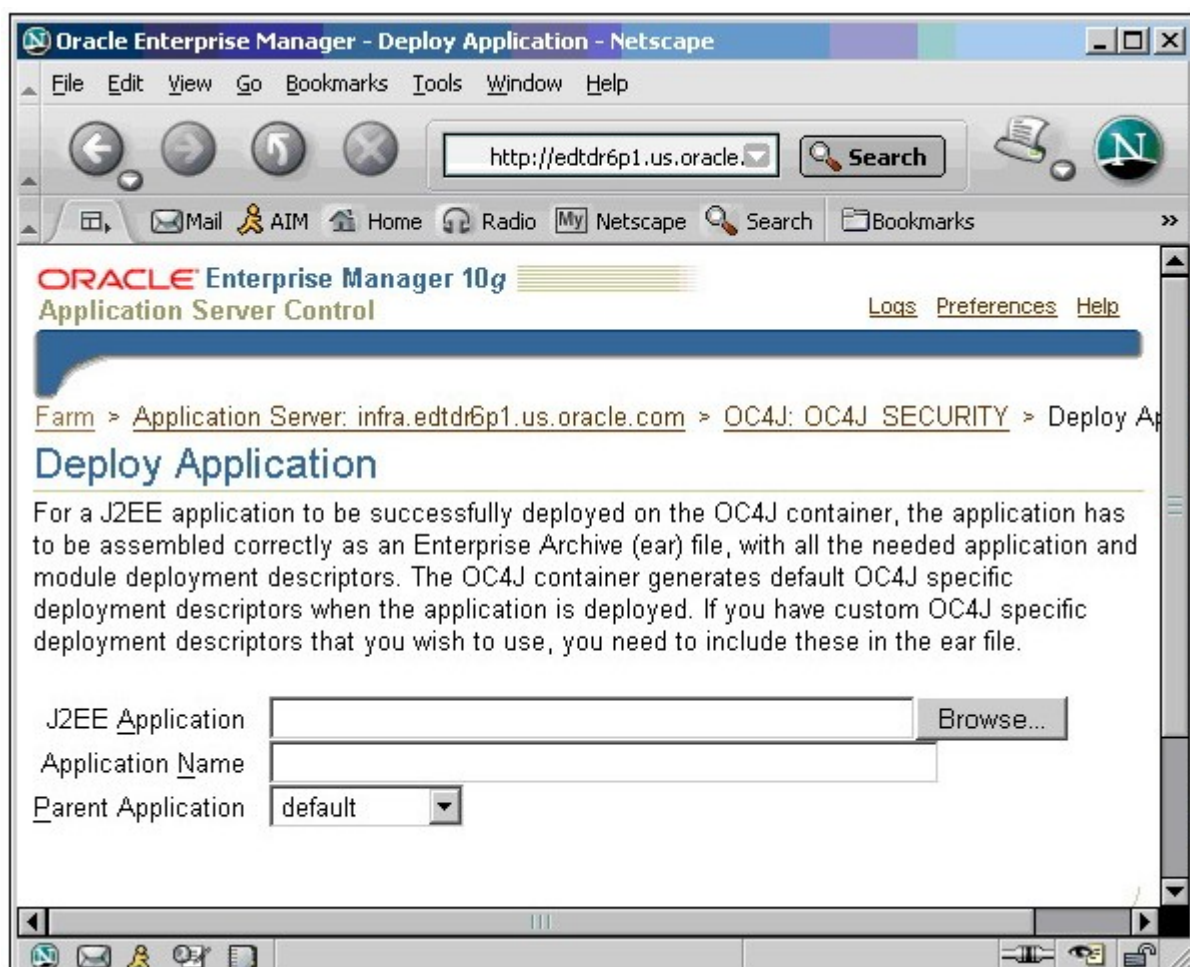
Correct:D

10.You have Oracle Application Server 10g instance running. For the parent Oracle HTTP Server process you want five child processes to be always running. In addition to this, you want to restrict the number of requests that are handled simultaneously by the child processes to 20. Which options would you use to achieve this objective? (Choose all that apply.)

- A.MaxClients 20
- B.StartServers 5
- C.MaxSpareServers 5
- D.MinSpareServers 10
- E.MaxRequestsPerChild 20

Correct:A B

11.You are deploying a Java 2, Enterprise Edition (J2EE) application using Application Server Control Console. View the Exhibit and examine the fields for which you provide the information. What is the significance of selecting a Parent Application?



- A.to share services, such as EJBs among multiple applications
- B.to identify the instance in which the application is to be deployed
- C.to maintain uniformity in the URLs of all the J2EE applications deployed so far
- D.to allow all the users of the parent application to access the application you are deploying

Correct:A

12.In your Oracle HTTP Server configuration file, you have configured the following directives as: StartServers 10 MaxSpareServers 20 MinSpareServers 15 Which statement is true?

- A.Twenty child processes would be running at any given point in time.
- B.Only 10 child processes would be running at any given point in time.
- C.Initially, the parent process would start 10 child processes, but later it would start additional child processes to maintain the value specified for MinSpareServers.
- D.Initially, the parent process would start 15 child processes, but later it would start more child processes automatically to reach the value specified for MaxSpareServers.

Correct:C

13.View the Exhibit and examine the contents of the portlist.ini file. You changed the password for the portal schema in the infrastructure database by using the ALTER USER SQL command. You are able to connect as portal to the infrastructure database. You use the following URL to access the associated OracleAS Portal instance, but you are not able to log in as user portal: http://host.domain:7778/pls/portal Which two causes could be the reasons for you not being able to log in? (Choose two.)

```

oracle@EDTDR6P1:~/bi/install
File Edit View Terminal Go Help

[Ports]
Oracle HTTP Server port = 7778
Oracle HTTP Server Listen port = 7779
Oracle HTTP Server SSL port = 4445
Oracle HTTP Server Listen (SSL) port = 4446
Oracle HTTP Server Diagnostic port = 7201
Application Server Control RMI port = 1851
Oracle Notification Server Request port = 6004
Oracle Notification Server Local port = 6101
Oracle Notification Server Remote port = 6201
Java Object Cache port = 7011
Log Loader port = 44001
DCM Java Object Cache port = 7102
Oracle Management Agent port = 1831
Application Server Control port = 1811
Oracle HTTP Server Listen port = 7779
Oracle HTTP Server Listen (SSL) port = 4446
Web Cache HTTP Listen port = 7778
Web Cache HTTP Listen (SSL) port = 4445
Web Cache Administration port = 4000
Web Cache Invalidation port = 4001
Web Cache Statistics port = 4002
"portlist.ini" 34L, 1232C

```

- A. Incorrect port number is specified in the URL.
- B. The password for the PORTAL_PUBLIC schema is not modified.
- C. The Portal User Profile portlet is not used to modify the portal user's profile.
- D. The portal schema password in Oracle Internet Directory (OID) is not changed.
- E. The connection information in the Database Access Descriptor (DAD) is not updated.

Correct: D E

14. You are creating a transport set to export a page group. The FINANCE_APP application is listed as an external object in the Transport Set Objects page. You require this FINANCE_APP application to be exported along with rest of the objects in the page group. What would you do?

- A. promote the FINANCE_APP application as an explicitly selected object
- B. specify the automatic_merge parameter explicitly while creating the transport set dump file
- C. use the opeasst.csh script to export the FINANCE_APP application along with the page group
- D. no explicit action required because the external objects are exported along with the page group by default

Correct: A

15. You want to create a user in Oracle Internet Directory (OID) who should be authenticated using Single Sign-On and should be able to retrieve user information from the Oracle Directory Server. Which two tools can you use to create the user? (Choose two.)

- A. Oracle Wallet Manager
- B. OID Self Service Console
- C. Oracle Directory Manager
- D. OracleAS Single Sign-On Server

E.Oracle Enterprise Manager 10g Application Server Control

Correct: B C

16. You are maintaining user information in the Oracle Internet Directory (OID) for authentication. You want to find out whether a user, STEVE, has the last name BENNETT. Which OID utility would you use?

- A. Idapbind
- B. Idifwrite
- C. Idapmoddn
- D. Idapcompare

Correct: D

17. In your Oracle Application Server 10g installation, you observe that the Oracle HTTP Server parent process is running as the Oracle user's process and currently using the default port number 7778. To comply with the development environment, you have been asked to use port number 80 for the parent process. Which step would you perform after changing the Listen directive to 80 in the httpd.conf file to ensure that the changed port number is used by the parent process?

- A. start the process as the root user
- B. start the process as the Oracle user
- C. start the process as any user other than root and Oracle
- D. change the Group directive in the httpd.conf file to the group of the root user and start the process as the Oracle user

Correct: A

18. In your existing Oracle Application Server 10g installation, you observe that the Oracle HTTP Server (OHS) error log file, error_log, is available in the location set in the ErrorLog directive. Because the location set in this directive is running out of space and there is no free space available in other locations, you want to suppress further logging of any kind of messages, temporarily, into the error log file. What would you do to achieve this objective?

- A. set ErrorLog to NULL
- B. set ErrorLog to NONE
- C. set ErrorLog to /dev/null
- D. remove the ErrorLog directive from the configuration file
- E. remove the TransferLog directive from the configuration file

Correct: C

19. While setting up the Oracle HTTP Server (OHS) for your Oracle Application Server 10g installation, you set the container directives in the httpd.conf file as shown in the Exhibit. View the Exhibit. Which three statements are true? (Choose three.)

```
<Location /server-status>
  SetHandler server-status
  Order deny,allow
  Deny from all
  Allow from edtdr5p1.us.oracle.com
</Location>
<Directory />
  Options FollowSymLinks
  AllowOverride None
</Directory>
<Files ~ "\.ht">
  Order allow,deny
  Deny from all
</Files>
```

- A.The Files container is used to match objects at file-system level.
- B.The Location container is used to match objects at the block level.
- C.The Directory container is always processed from the shortest directory component to the longest.
- D.The Location container is always processed last of the listed directives in the file irrespective of where it appears in the configuration file.

Correct:A C D

20.In your Oracle Application Server 10g installation, you want to restrict the number of requests allowed per connection to 16. Which two actions would you take to achieve this objective? (Choose two.)

- A.Limit 16
- B.KeepAlive ON
- C.MaxClients 16
- D.KeepAliveTimeout 16
- E.MaxRequestsPerChild 16
- F.MaxKeepAliveRequests 16

Correct:B F