

# T estpassport問題集



---

更に上のクオリティ      更に上のサービス

一年で無料進級することに提供する  
[Http://www.testpassport.jp](http://www.testpassport.jp)

**Exam** : **1Z0-478**

**Title** : Oracle SOA Suite 11g  
Essentials

**Version** : Demo

1.You have modeled a composite with a one-way Mediator component that is exposed via an inbound file adapter service.

How do you configure the inbound file adapter to read local files in ascending order of their lastModifiedTime?

- A. By setting the SingleThreadModel activationsSpec property to true and configuring the ListSorter activationSpec property to oracle.tip.adapter.file.inbound.listing.TimestampSorterAscending.
- B. By not making any configuration changes because, by default, the adapter reads input files in ascending order of their lastModifiedTime.
- C. By setting the ThreadCount activationSpec property to 0 and configuring the List Sorter activationSpec property to oracle.tip.adapter.file.inbound.listing.TimestampSorterDescending.
- D. By setting the ThreadCount activatioSpec property to – 1 and configuring the ListSorter activationSpec property to oracle.tip.adapter.file.inbound.liting.TimestampSorterAscending.

**Answer: A**

**Explanation:**

When files must be processed by Oracle File and FTP Adapters in a particular order, you must configure the sorting parameters. For example, you can configure the sorting parameters for Oracle File and FTP Adapters to process files in ascending or descending order by time stamps. You must meet the following prerequisites for sorting scenarios of Oracle File and FTP Adapters:

Use a synchronous operation

Add the following property to the inbound JCA file:

```
<propertyname="ListSorter" value="oracle.tip.adapter.file.inbound.listing.TimestampSorterAscending"/>  
<property name="SingleThreadModel" value="true"/>
```

2.Which two activities are typically performed during the service implementation and configuration phase of the SOA lifecycle?

- A. Capabilities are evaluated and prioritized based on business models and ROI.
- B. Oracle Enterprise Repository promotes services and harvested endpoints to the service registry.
- C. Developers find and reuse services to help them complete development.
- D. Developers use harvesting tools to submit their completed implementations to Oracle Enterprise Repository.

**Answer: C,D**

**Explanation:**

Implementation and Configuration As capabilities are funded, projects are established to implement the capability. SOA Suite developers working in JDeveloper can see and reuse services from the enterprise repository to complete their projects. Service Bus developers working in Eclipse can see and reuse services from the enterprise repository to complete their projects (C). Developers can also harvest their completed implementations directly to the Enterprise Repository (D). The Enterprise repository also supports VS .Net development.

3.In your solution, a web service client needs to invoke a series of three web services in support of a single transaction. The third web service needs the identity of the original web service client.

Which statement describes how the identity is made available by Oracle Web Services Manager (OWSM)?

- A. The transaction manager accesses an internal table that maintains credentials used to invoke each

individual web service in the chain.

B. Each web service in the chain does its own authentication so the third web service handles its own identity checking.

C. OWSM sets the user in the Java Authentication and Authorization (JAAS) Subject when the first web service successfully authenticates, and the Java Subject is used by subsequent web services to access the identity.

D. OWSM stores a SAML token from the first web service invocation in a database table, and that table is accessed by subsequent web services in the chain to retrieve identity.

**Answer: D**

**Explanation:**

Oracle Web Services Manager is a component of the Oracle Enterprise Manager Fusion Middleware Control, a run-time framework that provides centralized management and governance of Oracle SOA Suite environments and applications. You create and configure Oracle Web Services Manager policies in Oracle Enterprise Manager, and those policies are persisted in a policy store (a database is recommended). Oracle Web Services Manager lets you define policies against an LDAP directory and generate standard security tokens (such as SAML tokens) to propagate identities across multiple Web services used in a single transaction.

4. Identify the best description of the recommended use of shared storage in a high-availability (HA) implementation of Oracle SOA Suite?

A. To allow access to a common installation home for all domain cluster members

B. To allow access to a shared JTA log

C. Shared storage is not recommended for Oracle SOA Suite.

D. To allow access to the default user store on the file system for all domain cluster members

**Answer: B**

**Explanation:**

Note:

\* For proper recovery in case of failure, store both JMS and transaction logs in a location that is accessible to all the nodes that can resume the operations after a failure in a managed server. This requires a shared storage location that can be referenced by multiple nodes.

\* JTA TLogs need to be recovered to recover in-flight JTA transactions.

5. Composite X invokes an outbound DB adapter to write data to a database table.

You have configured JCA at the binding component as follows:

```
<property name = "jca.retry.count" type = "xs:int" many = "false" override = "may" > 2</property>
```

```
<property name = "jca.retry.interval" type = "xs:int" many = "false" override = "may" > 2</property>
```

You have also modeled a fault policy to retry the invocation three times in case of remote Fault as follows:

```
<retryCount>3</retryCount>
```

```
<retryInterval>3</retryInterval>
```

Which result describes what happens when the database that is being accessed by the above binding component goes down?

A. The invocation is retrieved for a total of two times every two seconds. Fault policy retries are ignored.

B. The invocation is retried for a total of six times every three seconds.

- C. The invocation is retried for a total of six times every two seconds.
- D. The fault policy retries occur within the JCA retries. So two JCA retries are executed two seconds apart. Within each JCA retry, three fault policy retries are executed three seconds apart.
- E. The JCA retries occur within the fault policy retries. So three fault policy retries are executed three seconds apart. Within each fault policy retry, two JCA retries are executed two seconds apart.

**Answer: E**

**Explanation:**

Note:

\* Global retries for any error handling are returned to the BPEL Receive activity instance, for example, or, more generally, to the point at which the transaction started. Such a retry could occur if there was an error such as a temporary database fault. The default retry count is by default indefinite, or specified in the `jca.retry.count` property.

\* Properties you can specify in the `composite.xml` file include:

`/jca.retry.count`

Specifies the maximum number of retries before rejection. Again, specifying this value is a prerequisite to specifying the other property values.

`/jca.retry.interval`

Specifies the time interval between retries (measured in seconds.)

\* A `remoteFault` is also thrown inside an activity. It is thrown because the invocation fails. For example, a SOAP fault is returned by the remote service.

6.Which statement best describes deploying your SOA application to a cluster?

- A. Manually deploy the application to each managed server in the cluster.
- B. After deployment, restart each managed server in the cluster before the application is available for service.
- C. Use WebLogit Server Administration Console for deployment because you cannot deploy to a cluster from JDeveloper.
- D. Treat your cluster as a single deployment target and let the administration server automatically deploy the application to all managed servers in the cluster.

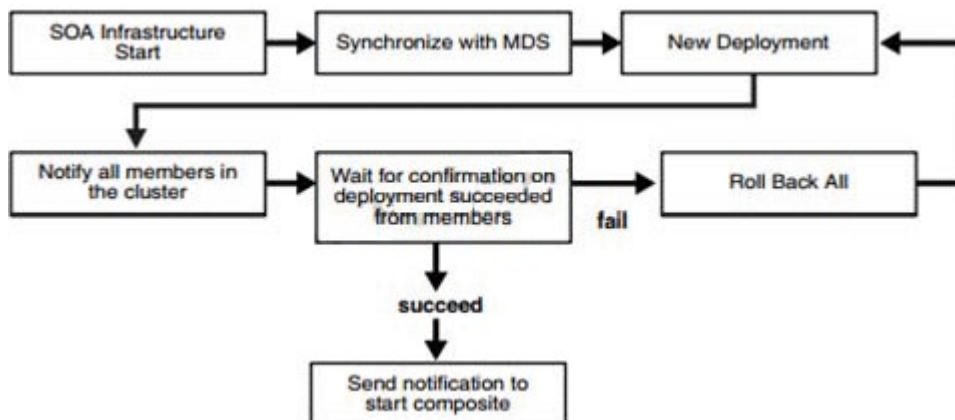
**Answer: D**

**Explanation:**

Note:

\* Oracle SOA Service Infrastructure Cluster-Wide Deployment Composite deployments are stored centrally by the SOA Service Infrastructure in the MDS repository. Each time the SOA Service Infrastructure is started, it synchronizes itself with the MDS repository and SOA store to get the deployment and process state. The deployment coordinator infrastructure orchestrates the notifications for composites deployments and updates. When a new deployment or update takes place, deployment coordinator notifies all members in the cluster. When all members in the cluster confirm that the deployment has succeeded, the master sends a notification to start the composite. If a deployment fails on any one of the nodes, it is rolled back to the rest of the cluster

\* Figure: Cluster-Wide Deployment of Oracle SOA Composites



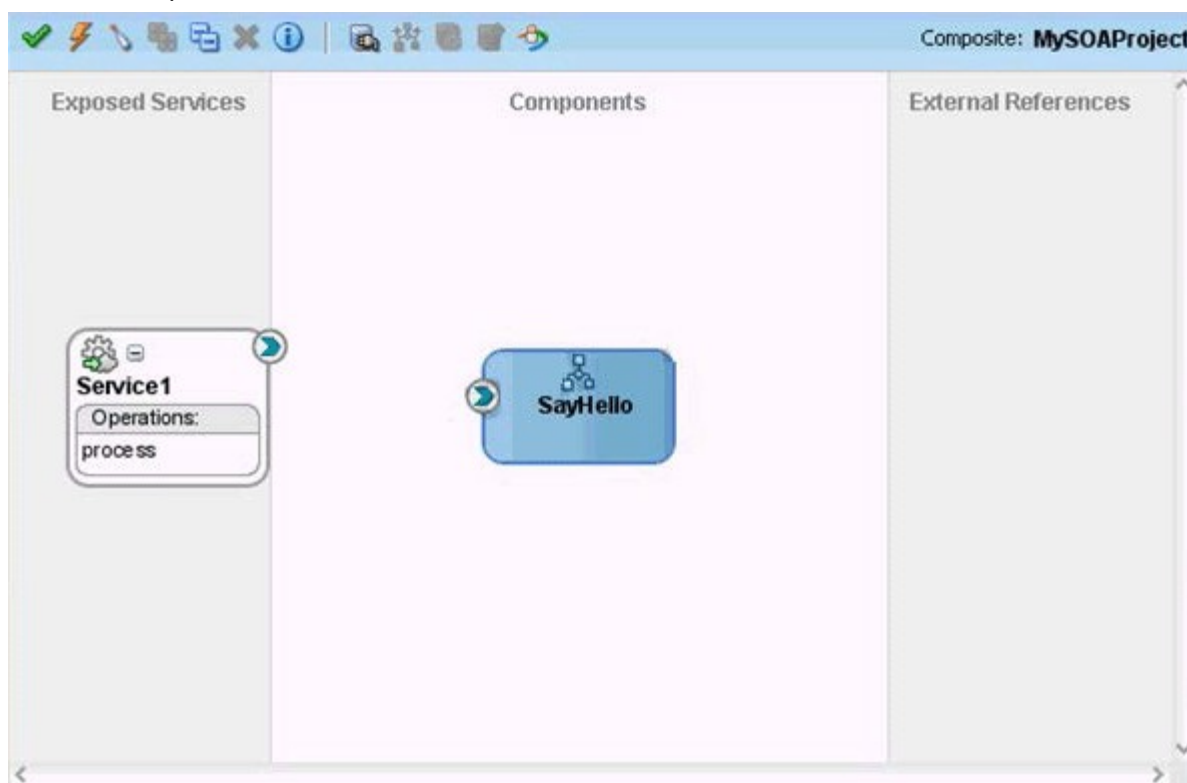
7. Identify two fundamental terms in Service Component Architecture (SCA) that are represented visually in the SOA Composite Editor.

- A. Application
- B. Entry point
- C. Component
- D. Wire
- E. External call

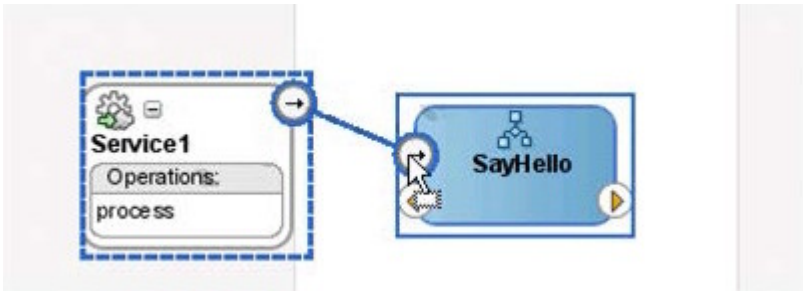
**Answer:** C,D

**Explanation:**

C: SOA Composite Editor:



D: You wire (connect) the web service and BPEL process service component. Example Wire Connection:  
Note:



\* SOA composite applications consist of the following parts:

- Service binding components
- Composites
- Service components
- Reference binding components
- Wires

8. An Oracle Web Services Manager (OWSM) agent \_\_\_\_\_.

- A. Can apply categories of policies in any specified order
- B. Generates a request to an LDAP directory to look up policy definitions
- C. Always fails if the Policy Manager becomes unavailable
- D. Intercepts requests to and responses from a client or service

**Answer: D**

**Explanation:**

The OWSM Agent protects access to a web service at the web service provider (server-side Agent)

- Step1: The client posts a request to a web service
- Step2: The Agent intercepts the request, applies security policies (e.g., decryption, signature verification, authentication, authorization), and passes the request to the web service
- Step3: The web service returns a response
- Step4: The Agent intercepts the response, applies security policies (e.g., encryption), and passes the response to the client



9. You are modeling a conditional branch using a Switch element. You choose not to include an Otherwise branch.

What is the result?

- A. A business fault is generated if one of the case branches cannot execute.
- B. A design time error is indicated by JDeveloper.
- C. You need to include fault handler to account for the fact that none of the case branches can execute.
- D. If none of the case branches can execute, control passes to (the next element in the BPEL model).

**Answer: D**

**Explanation:**

Note:

\* Conditional branching introduces decision points to control the flow of execution of a BPEL process. You can use a switch activity to produce different actions based on conditional branching. You set up two or more branches, with each branch in the form of an XPath expression. If the expression is true, then the branch is executed. If the expression is false, then the BPEL process moves to the next branch condition, until it either finds a valid branch condition, encounters an otherwise branch, or runs out of branches. If more than one branch condition is true, then BPEL executes the first true branch.

10.Which capability or benefit is not applicable to Oracle Service Bus?

- A. Service mediation
- B. Service abstraction
- C. Translation and transformation
- D. Service creation
- E. Stateful processing

**Answer: E**

**Explanation:**

Service Bus only can do stateless processing, and one of the most important benefits of Service Bus is the service abstraction