

# T estpassport問題集



---

更に上のクオリティ      更に上のサービス

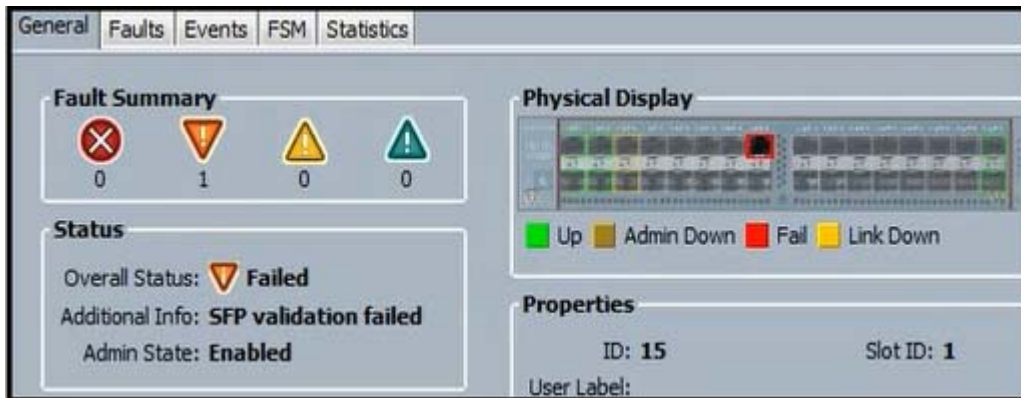
一年で無料進級することに提供する  
[Http://www.testpassport.jp](http://www.testpassport.jp)

**Exam : 300-615**

**Title : Troubleshooting Cisco Data  
Center Infrastructure (DCIT)**

**Version : DEMO**

1.Refer to the exhibit.



When an engineer inserts 8-Gb Fibre Channel SFP port 15 on a Cisco UCS Fabric Interconnect, the port fails.

What is causing this issue?

- A. The polarity of the fiber cable is reversed.
- B. Port 15 is configured as an Ethernet port.
- C. Port 15 is configured for 4-Gb Fibre Channel.
- D. Port 15 is missing a slicense.

**Answer: B**

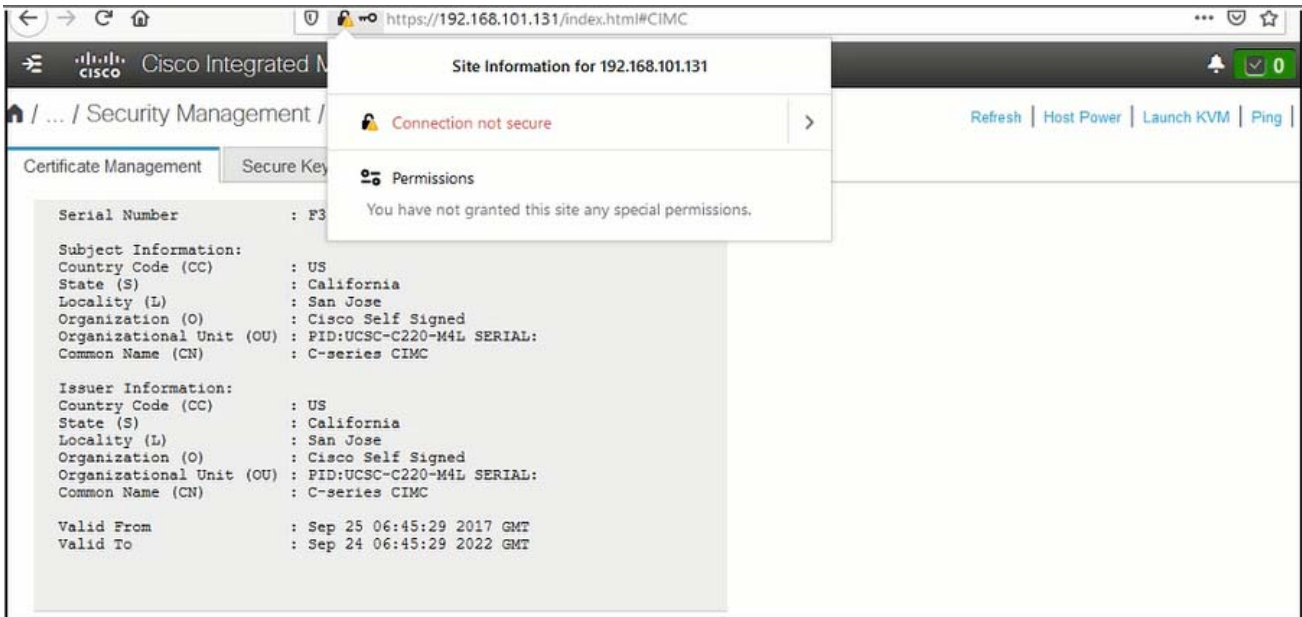
2.An engineer must place a Cisco UCS B-Series Server in a single server pool in Cisco UCS Manager. The engineer creates a qualification policy, but the server is still seen in multiple pools.

Which two actions resolve the issue? (Choose two.)

- A. Set the operating system qualifier side the Server Pool Policy Qualification.
- B. Set the number of vNICs qualifier inside the Server Pool Policy.
- C. Set the storage capacity qualifier inside the Server Pool Policy Qualification.
- D. Select the Server Pool Policy from the qualification drop-down menu in the Server Pool Policy Qualification.
- E. Select the Server Pool Policy Qualification from the qualification drop-down menu in the Server Pool Policy.

**Answer:AE**

3.Refer to the exhibit.



An engineer cannot log in to the Cisco IMC page of the Cisco UCS C220 server.

Which action resolves the issue?

- A. Replace the self-signed certificate that is installed on the Cisco IMC with a server certificate that is signed from the client corporate certificate "authority.
- B. Replace the self-signed certificate that is installed on the Cisco IMC with a user certificate that is signed from the client corporate certificate authority.
- C. Use the DNS of the Cisco IMC webpage login page instead of the IP address for the connection to be secure.
- D. Use the FQDN of the Cisco IMC webpage login page instead of the IP address for the connection to be secure.

**Answer: A**

4.A Cisco UCS B-Series Blade Server is configured to boot a VMware ESXi host from an EMC VNX storage array by using a Fibre Channel SAN. The boot order is confirmed to be configured as expected, but the server fails to boot from the SAN.

Which action resolves the problem?

- A. Set the same WWNN pools for vHBA adapters.
- B. Set the boot LUN to the highest LUN ID in the storage array.
- C. Set the same WWPN pools for vHBA adapters.
- D. Set the boot LUN to the lowest LUN ID in the storage array.

**Answer: C**

5.An engineer troubleshoots a custom AV pair that a client created on an external authentication server to map a read-only role for a specific security domain.

Which Z pair solves the problem?

- A. shell=Security\_Domain\_1/Read\_Role\_1|Read\_Role\_2
- B. shell:domains=Security\_Domain\_1//Read\_Role\_1|Read\_Role\_2
- C. shell:domains=Security\_Domain\_1/Read\_Role\_1|Read\_Role\_2
- D. shell:domains=Security\_Domain\_1/Write\_Role\_1|Read\_Role\_2

**Answer: B**