

T estpassport問題集



更に上のクオリティ 更に上のサービス

一年で無料進級することに提供する
[Http://www.testpassport.jp](http://www.testpassport.jp)

Exam : **642-055**

Title : ARSFE Advanced Routing
and Switching for Field
Engineers

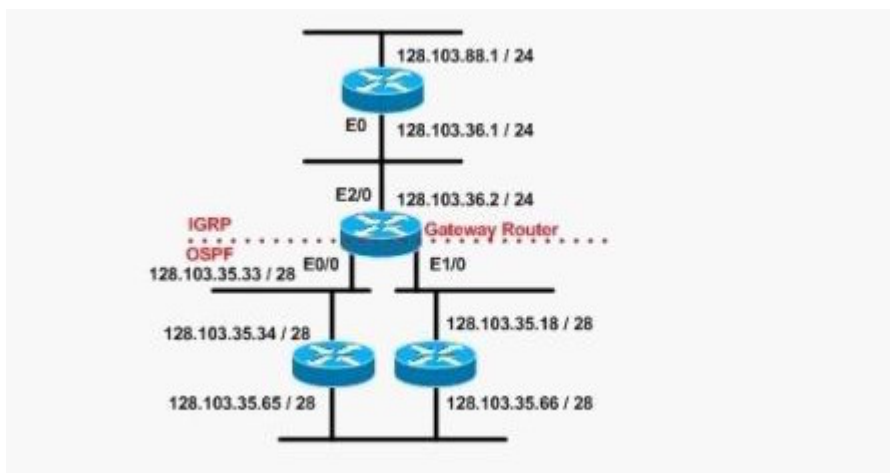
Version : DEMO

1. Which three of these items are IPv6 transition mechanisms? (Choose three.)

- A. NATv6
- B. PATv6
- C. ISATAP
- D. automatic 4to6 relay tunnels
- E. dual stack configurations
- F. manually configured overlay tunnels

Correct: C E F

2. Refer to the exhibit. You are migrating a network from IGRP to OSPF. What must you do to ensure that connectivity and reachability of all networks is maintained between routing protocols when OSPF has the longer subnet mask?



- A. Use the default metric of 1.
- B. This scenario should not present any reachability problems if the autonomous systems are the same.
- C. Add multiple static routes in the gateway router pointing to the OSPF network.
- D. Add a static route in the gateway router for 128.103.35.0/24 pointing to null0.

Correct: D

3. Your customer wants to build a network for a financial trading floor that has a requirement for multiple high-value transactions, which are also vital to the customer. What are the two most critical requirements? (Choose two.)

- A. no single point of failure
- B. trading database server location
- C. redundant application servers location
- D. deterministic response to all failures
- E. determine which protocol to use

Correct: A D

4. Which of these tools should you use to compress VoIP packets on a low-speed Frame Relay circuit?

- A. RTP header compression
- B. TCP header compression
- C. FRF.9 payload compression
- D. Predictor payload compression
- E. Cisco proprietary payload compression

Correct:A

5.Referring to the debug output shown below, which one of the statements is correct?

```
R1# debug ipv6 icmp
ICMPv6: Sending echo request to 2001:DB8:C18:1::D0C
ICMPv6: Received ICMPv6 packet from 2001:DB8:C18:1::D0C, type 129
ICMPv6: Received ICMPv6 packet from FE80::260:3EFF:FE47:1530, type 134
```

- A.FE80::260:3EFF:FE47:1530 is the site-local address of R1.
- B.2001:DB8:C18:1::D0C is a link-local address.
- C.The last ICMP message received is a router advertisement message.
- D.The type 129 ICMP echo reply message indicates an MTU error.
- E.The type 129 message is an ICMP redirect message.

Correct:C

6.You are working with a client to deploy QoS on their Frame Relay WAN. They would like to be able to allow packets to cross the Frame Relay WAN but have them marked as discard eligible if they exceed the QoS policy. How would you accomplish this task?

- A.Configure a service policy that sets the DE bit and apply it to the serial interface connected to the Frame Relay WAN.
- B.Configure a policy map that has a burst-max action of setting the DE bit if the policy is exceeded.
- C.Configure a class map that sets the DE bit so that the policy map can correctly apply a violate-action if the policy is exceeded.
- D.Configure a policy map that has a violate-action to change the DE bit from 0 to 1.

Correct:D

7.Refer to the exhibit. You are troubleshooting a high availability network that is having longer-than-acceptable failover times. What command will have the most significant impact in this problem?

```
...
ip multicast-routing !Enable IP multicast routing!
!
interface loopback 1
  description One Loopback address for this routers Sparse
  Mode RP function
  ip address 10.0.2.1 255.255.255.0
  ip pim sparse-dense-mode
...
```

- A.pim query-interval 1 sec
- B.ip pim query-interval 100 msec
- C.ip query pim-interval 10 msec
- D.pim query-interval 100 msec

Correct:B

8.Refer to the exhibit. Which two configuration changes will result in Router_A peering with neighbor Router_B using address 192.168.1.2? (Choose two.)

```

Router_A#show ip bgp neighbor 192.168.1.2

BGP neighbor is 192.168.1.2, remote AS 10, external
link
Index 1, Offset 0, Mask 0x2
BGP version 4, remote router ID 0.0.0.0
BGP state = Idle, table version = 0
Last Read 00:00:34, hold time is 180, keepalive
interval is 60 seconds
Minimum time between advertisement runs is 30 seconds
Received 0 messages, 0 notifications, 0 in queue
Sent 0 messages, 0 notifications, 0 in queue
Prefix advertised 0, suppressed 0, withdrawn 0
Connections established 0, dropped 0
Last reset never
0 accepted prefixes consume 0 bytes
0 history paths consume 0 bytes
External BGP neighbor not directly connected.
No active TCP connection

```

- A. Use the no synchronization command to allow the neighbor relationship to be established without an IGP route.
- B. Use the neighbor ebgp-multihop command to override the one-hop EBGp limit.
- C. Use a route reflector to allow the routes to be propagated correctly.
- D. Use the neighbor next-hop-self command to allow the routers to peer using their loopback addresses instead of their directly connected addresses.
- E. Use a confederation to make Router_A and Router_B appear to be IBGP neighbors.
- F. Configure Router_A and Router_B in the same AS.

Correct: B F

9. Refer to the exhibit. You have a Cisco router directly connected to a non-Cisco router via a leased T1 line. The service provider has validated that the T1 is operational. What should be completed for communications between routers to commence?

```

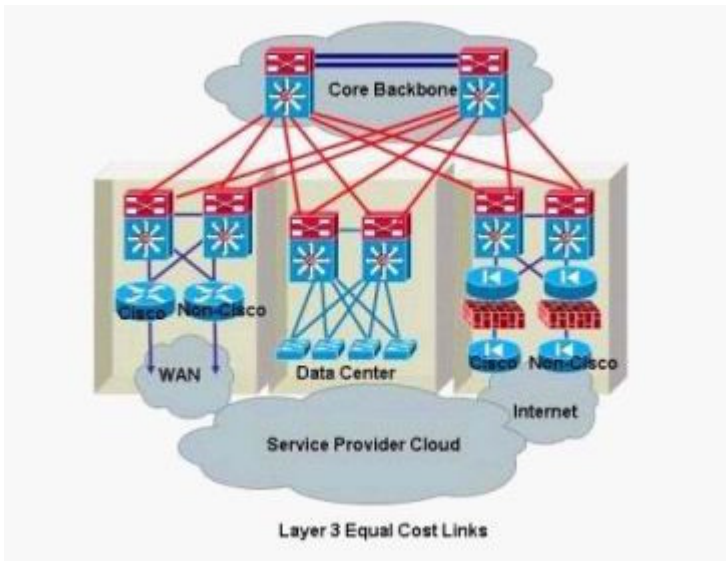
Serial0/1 is up, line protocol is down
Hardware is PowerQUICC serial
Internet address is 142.16.13.4/24
MTU 1500 bytes, BW 1544 Kbit, DLY 20000 usec,
Reliability 255/255, txload 1/255, rxload 1/255
Encapsulation HDLC, loopback not set
Keepalive set (10 sec)
...some info omitted...
5 minute input rate 0 bits/sec, 0 packets/sec
5 minute output rate 0 bits/sec, 0 packets/sec
259810 packet input, 33080103 bytes, 0 no buffer
Received 0 broadcasts, 0 runts, 0 giants, 0 throttles
1 input errors, 0 CRC, 1 frame, 0 overrun, 0 ignored, 0 abort
260370 packets output, 32082918 bytes, 0 underruns
0 output errors, 0 collisions, 1 interface resets
0 output buffer failures, 0 output buffers swapped out
3 carrier transitions
DCD=up DSR=up DTR=up RTS=up CTS=up

```

- A. Reload both routers.
- B. Reset the interface on both routers.
- C. Enable Frame Relay on both routers.
- D. Enable PPP encapsulation on both routers.
- E. Configure a routing protocol on both routers.

Correct:D

10.Refer to the exhibit. You have a Cisco router and a non-Cisco router directly connected to a service provider cloud. You want to set up dual connectivity into the corporate network. Which protocol must you configure?



- A.Hot Standby Router Protocol
- B.Gateway Load Balancing Protocol
- C.Virtual Router Redundancy Protocol
- D.Multigroup Hot Standby Router Protocol

Correct:C