

T estpassport問題集



更に上のクオリティ 更に上のサービス

一年で無料進級することに提供する
[Http://www.testpassport.jp](http://www.testpassport.jp)

Exam : **642-311**

Title : Cisco Optical SONET Exam
(SONET)

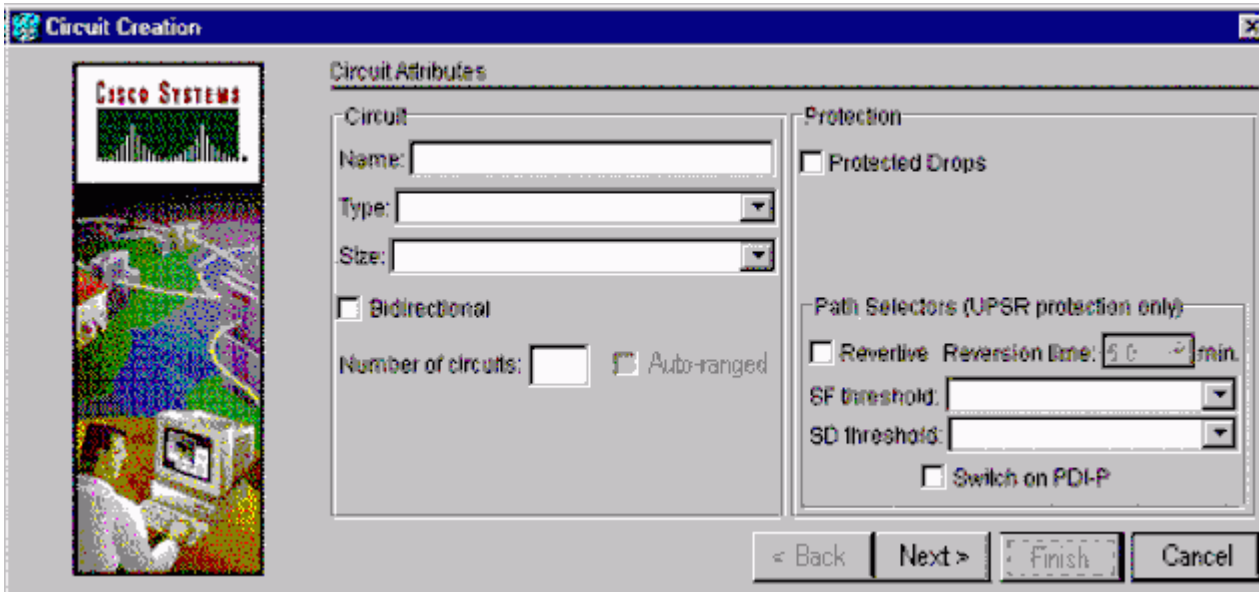
Version : DEMO

1.You are installing a Cisco ONS 15454 in a service provider site. A DS3 cable is to be connected to a digital cross-connect system. What is the maximum distance allowed between the two?

- A.225 ft
- B.450 ft
- C.655 ft
- D.900 ft

Correct:B

2.Click the Exhibit button. Within an ONS 15454, you are provisioning a circuit on an unprotected UPSR ring. In the exhibit, which two must you configure? (Choose two.)



- A.revertive
- B.circuit type
- C.circuit size
- D.bidirectional
- E.protected drops
- F.switch on PDI-P

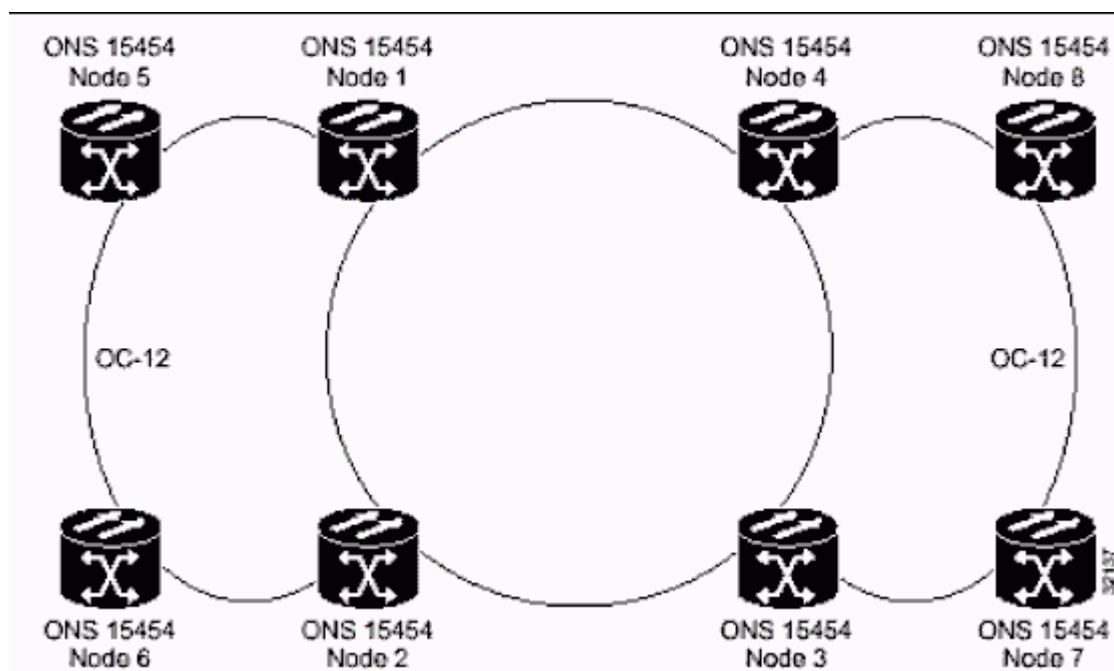
Correct:B C

3.With R4.0, how many total DCC tunnel connections can each ONS 15454 support using the TCC+ card?

- A.10
- B.32
- C.64
- D.84
- E.96

Correct:B

4.Click the Exhibit button. A customer has several interconnected core rings (see exhibit). They want to create several irtual rings?utilizing their OC-192 backbone (nodes 1,2,3,4). What should you recommend?



- A.PPMN with BLSR rings
- B.PPMN with UPSR rings
- C.1:N protection on all core circuits
- D.multi-ring interconnect with BLSR rings

Correct:B

5.Which three timing modes are supported on the ONS 15454 shelf? (Choose three.)

- A.line timing
- B.loop timing
- C.internal timing
- D.through timing
- E.external timing

Correct:A C E