

T estpassport問題集



更に上のクオリティ 更に上のサービス

一年で無料進級することに提供する
[Http://www.testpassport.jp](http://www.testpassport.jp)

Exam : PW0-050

Title : Wireless#

Version : Demo

1. In an 802.11 wireless LAN, what term is used to describe the wireless network name?

- A. BSSID
- B. ATIM
- C. DIFS
- D. SSID
- E. FHSS

Answer: D

2. What is the maximum speed of IrDA compliant serial infrared (SIR)?

- A. 19.2 Kbps
- B. 57.6 Kbps
- C. 115.2 Kbps
- D. 1.152 Mbps
- E. 4 Mbps

Answer: C

3. A ZigBee network can scale to how many nodes?

- A. 2,000
- B. 10,000
- C. 42,000
- D. 65,000
- E. 78,000

Answer: D

4. Which wireless data technology would have its data rate most negatively impacted by bright sunlight?

- A. WiMAX
- B. MIMO
- C. Bluetooth

D. Wi-Fi

E. Infrared

Answer: E

5. Which wireless technology supports both line-of-sight (LoS) and non-LoS connectivity?

A. ZigBee

B. WiMAX

C. Wi-Fi

D. Infrared

E. Bluetooth

Answer: B

6. The 802.16-2004 standard, supported by the WiMAX interoperability initiative, supports which features?

A. Client mobility

B. 802.16e compatibility

C. Quality of Service (QoS)

D. Strong security

E. Ad Hoc client networking

Answer: CD

7. 802.11a compliant wireless LAN systems use which frequency bands?

A. 2.4 GHz ISM band

B. 5.2 GHz U-NII band

C. 5.3 GHz U-NII band

D. 900 MHz ISM band

E. 5.7 GHz ISM band

Answer: BC

8. Bluetooth devices use which spread spectrum technology?

- A. Frequency Hopping Spread Spectrum (FHSS)
- B. Direct Sequence Spread Spectrum (DSSS)
- C. Orthogonal Frequency Division Multiplexing (OFDM)
- D. Infrared Spread Spectrum (ISS)

Answer: A

9. Which wireless LAN standard specifies the use of Direct Sequence Spread Spectrum technology?

- A. 802.11a
- B. 802.11b
- C. 802.16
- D. 802.3af
- E. 802.15.1

Answer: B

10. The IEEE 802.16e standard supports frequencies in what range?

- A. 2.5 3.5 GHz
- B. 2.4 5.7 GHz
- C. 2 11 GHz
- D. 6 12 GHz

Answer: C

11. What wireless industry organization implements certification testing to assure interoperability of wireless LAN hardware complying with the 802.11-1999 standard and related amendments?

- A. WiMAX Forum
- B. Wi-Fi Alliance
- C. Infrared Data Association
- D. IEEE
- E. Bluetooth SIG

Answer: B

12. Which wireless industry organization is described as, an association of companies working together to enable reliable, cost-effective, low-power, wirelessly networked, monitoring and control products based on an open global standard.?

- A. Wi-Fi Alliance
- B. Bluetooth SIG
- C. ZigBee Alliance
- D. WiMAX Forum
- E. IrDA

Answer: C 13. The Wi-Fi Alliance implemented which hardware certification for wireless LAN quality-of-service (QoS) interoperability?

- A. WEP
- B. WQoS
- C. WPA
- D. WMM
- E. WPA2

Answer: D

14. Bluetooth devices use which license-free wireless band?

- A. 5 GHz ISM band
- B. 5 GHz U-NII bands
- C. 2.4 GHz ISM band
- D. 3.5 GHz Licensed band

Answer: C

15. What is the most effective technique of minimizing battery drain by a laptop's wireless Mini-PCI card?

- A. Remove the Mini-PCI card when you do not require network access
- B. Enable Power Save mode
- C. Move farther away from the access point

D. Lower the transmission frequency of the Mini-PCI card

Answer: B

16. Which statement is true regarding the ZigBee specification?

A. Establishes topology models at the network layer of the ZigBee stack

B. Allows the user to choose topology models from a list at the time of use

C. Topology models are determined by the application programmer only

D. Is dependent on topology models established by the 802.15.4 standard

Answer: A

17. When an access point is present in an 802.11g wireless LAN, the network is operating as a(n) _____ basic service set.

A. Infrastructure

B. Active

C. Distributed

D. Point Coordinated

Answer: A

18. Which wireless LAN standards support a maximum data rate of 54 Mbps?

A. 802.11a

B. 802.15.1

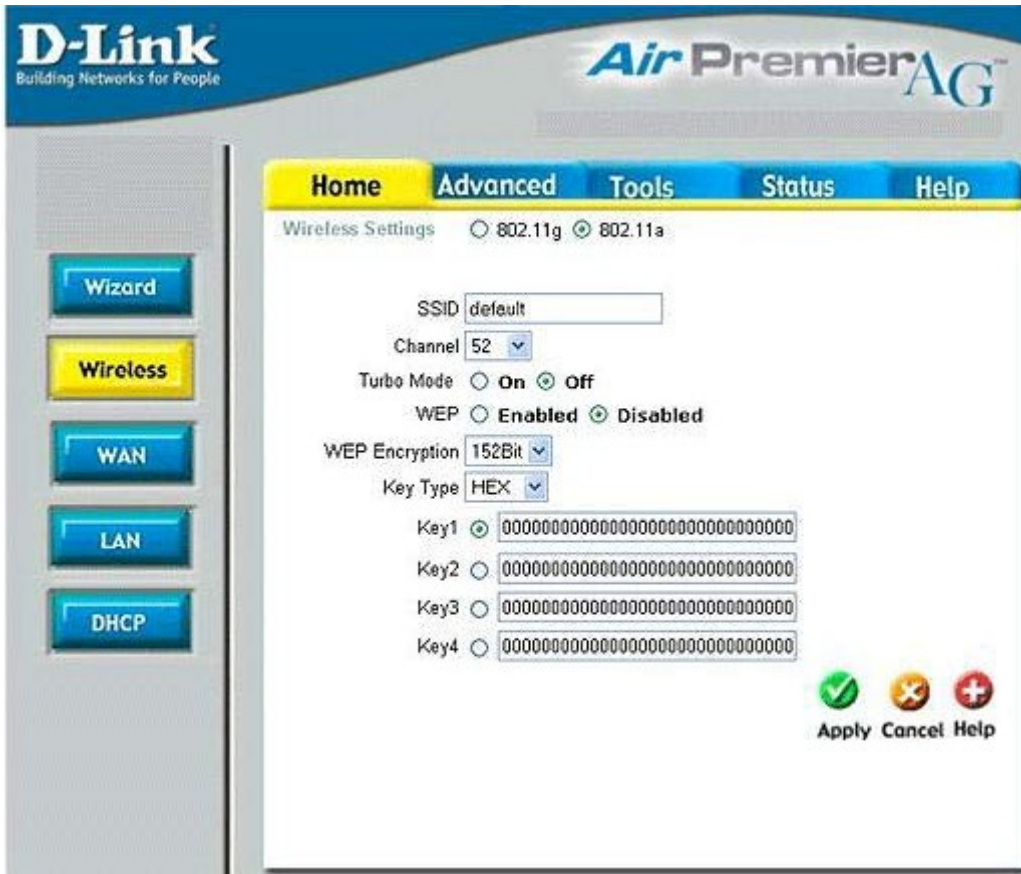
C. 802.11g

D. 802.11i

E. 802.16

Answer: AC

19. The picture shows the management interface of which wireless device type?



- A. Wireless LAN router
- B. Wireless LAN access point
- C. Wireless LAN bridge
- D. Wireless LAN repeater
- E. Wireless LAN media center

Answer: A

20. What type of wireless LAN antenna is shown?



- A. Patch/Panel
- B. Omni-directional
- C. Yagi
- D. Ground plane
- E. Parabolic Dish

Answer: B